

Genesis[®] sterilization container system International



V. Mueller[®]





Table of contents

| | |
|--|-------|
| Genesis Sterilization Containers and Baskets..... | 8-13 |
| Genesis DIN SIZE Sterilization Containers and Baskets..... | 14-15 |
| Genesis Sterilization Basket Selection Guide..... | 16-19 |
| Genesis Sterilization Container Accessories..... | 20-31 |
| Sterilization Cases, Trays and Accessories..... | 32-33 |
| Microsurgical Cases and Trays..... | 34 |
| Stringers and Mitts..... | 35 |
| Holders and Racks..... | 36 |

Genesis sterilization container system

Protect your valuable surgical instrument investment with the V. Mueller® brand Genesis container system - the name you trust in the OR. The Genesis container system was designed with hard coat anodized aluminum to protect and maintain the sterility of your surgical instrumentation. Available in a wide range of sizes, the Genesis container system offers a variety of baskets and accessories to help you organize and speed instrument set-up. The Genesis container system consistently provides a return on your investment and a green alternative to sterilization wrap.

Hard coat anodization



Protects from corrosion, scratches and overall container wear and tear.

Lid lifting handles



Add control to lid and filter inspection.

Stackability



Conveniently provides storage while saving space.

Offset perforations



When locked onto the lid, the retention plate creates a barrier that helps prevent objects from puncturing the filter.



Body-centered carrying handles



Add support by bringing the arms and container close to the center of the body to help relieve stress on the shoulders, back, arms and wrists.

Compression gasket seal



Forms by the interlocking latches to maintain sterility. When opened, the container bounces from the compression between the gasket and container's bottom.

Unique dimensions



Fit more instruments without requiring reorientation in the basket of existing wrapped trays, of course standard DIN sizes are available as well.

Single-use disposable filter



Helps support efficacy for each cycle while maintaining content sterility.

Raised bottom



Keeps the bottom off surfaces and protects filter integrity.

Double-sided data blocks



Offer visibility from either side of the container for easy set identification.

Tamper-evident arrows



Visibly confirm that the container has not been opened and has correctly undergone sterilization.

Genesis container lids are available in a wide range of colors. With colored lids, you can easily identify sets and specialty-specific trays. Order new lids for your current containers in any of the new colors to help you identify specific sets.





Genesis® Sterilization Containers and Baskets

Genesis Containers and Baskets



Top to bottom: Half-, mid- and full-length containers, 5in deep

| Cat. No. | Description | Inside Dim. L x W x H | Outside Dim. L x W x H |
|--|-------------------|--|--|
| Half-Length Containers | | | |
| CD1-4B | Perforated bottom | 9.8in x 11.4in x 4.2in 24.8cm x 28.9cm x 10.7cm | 11.8in x 12.4in x 4.5in 30cm x 31.4cm x 11.4cm |
| CD1-5B | Perforated bottom | 9.8in x 11.4in x 5.1in 24.8cm x 28.9cm x 12.9cm | 11.8in x 12.4in x 5.3in 30cm x 31.4cm x 13.5cm |
| CD1-6B | Perforated bottom | 9.8in x 11.4in x 5.8in 24.8cm x 28.9cm x 14.8cm | 11.8in x 12.4in x 6.1in 30cm x 31.4cm x 15.4cm |
| CD1-4C | Solid bottom | 9.8in x 11.4in x 4.2in 24.8cm x 28.9cm x 10.7cm | 11.8in x 12.4in x 4.5in 30cm x 31.4cm x 11.4cm |
| CD1-5C | Solid bottom | 9.8in x 11.4in x 5.1in 24.8cm x 28.9cm x 12.9cm | 11.8in x 12.4in x 5.3in 30cm x 31.4cm x 13.5cm |
| CD1-6C | Solid bottom | 9.8in x 11.4in x 5.8in 24.8cm x 28.9cm x 14.8cm | 11.8in x 12.4in x 6.1in 30cm x 31.4cm x 15.4cm |
| Half-Length Baskets - Perforated | | | |
| BP1-2A | Standard handles | 9.1in x 10.4in x 1.9in 23.1cm x 26.5cm x 4.8cm | 9.3in x 10.6in x 2.4in 23.5cm x 27cm x 6.2cm |
| BP1-3A | Standard handles | 9.1in x 10.4in x 2.6in 23.1cm x 26.4cm x 6.6cm | 9.3in x 10.6in x 3.2in 23.5cm x 26.9cm x 8.1cm |
| BP1-4A | Standard handles | 9.1in x 10.4in x 3.6in 23.1cm x 26.4cm x 9.1cm | 9.3in x 10.6in x 4.2in 23.5cm x 26.9cm x 10.7cm |
| BP1-2V | Vertical handles | 9.1in x 10.4in x 1.9in 23.1cm x 26.4cm x 4.8cm | 9.3in x 10.6in x 2.4in 23.5cm x 26.9cm x 6.2cm |
| BP1-3V | Vertical handles | 9.1in x 10.4in x 2.6in 23.1cm x 26.4cm x 6.6cm | 9.3in x 10.6in x 3.2in 23.5cm x 26.9cm x 8.1cm |
| BP1-4V | Vertical handles | 9.1in x 10.4in x 3.6in 23.1cm x 26.4cm x 9.1cm | 9.3in x 10.6in x 4.2in 23.5cm x 26.9cm x 10.7cm |
| Half-Length Baskets - Stacking. Perforated with solid sides | | | |
| BP1-1AS | Standard handles | 8.7in x 10in x 0.8in 22.2cm x 25.4cm x 2cm | 8.9in x 10.2in x 1.4in 22.6cm x 25.9cm x 3.5cm |
| BP1-2AS | Standard handles | 8.7in x 10in x 1.8in 22.2cm x 25.4cm x 4.5cm | 8.9in x 10.2in x 2.4in 22.6cm x 25.9cm x 6.2cm |
| BP1-2VS | Vertical handles | 8.7in x 10in x 1.8in 22.1cm x 25.4cm x 4.6cm | 8.9in x 10.2in x 2.4in 22.6cm x 25.9cm x 6.2cm |

| Cat. No. | Description | Inside Dim. L x W x H | Outside Dim. L x W x H |
|---|-------------------|---|---|
| Mid-Length Containers | | | |
| CD2-4B | Perforated bottom | 17.2in x 11.4in x 4.2in 43.6cm x 28.9cm x 10.7cm | 19.2in x 12.4in x 4.5in 48.8cm x 31.4cm x 11.4cm |
| CD2-5B | Perforated bottom | 17.2in x 11.4in x 5.1in 43.6cm x 28.9cm x 12.9cm | 19.2in x 12.4in x 5.3in 48.8cm x 31.4cm x 13.5cm |
| CD2-6B | Perforated bottom | 17.2in x 11.4in x 5.8in 43.6cm x 28.9cm x 14.8cm | 19.2in x 12.4in x 6.1in 48.8cm x 31.4cm x 15.4cm |
| CD2-8B | Perforated bottom | 17.2in x 11.4in x 7.5in 43.6cm x 28.9cm x 19.1cm | 19.2in x 12.4in x 7.8in 48.8cm x 31.4cm x 19.8cm |
| CD2-4C | Solid bottom | 17.2in x 11.4in x 4.2in 43.6cm x 28.9cm x 10.7cm | 19.2in x 12.4in x 4.5in 48.8cm x 31.4cm x 11.4cm |
| CD2-5C | Solid bottom | 17.2in x 11.4in x 5.1in 43.6cm x 28.9cm x 12.9cm | 19.2in x 12.4in x 5.3in 48.8cm x 31.4cm x 13.5cm |
| CD2-6C | Solid bottom | 17.2in x 11.4in x 5.8in 43.6cm x 28.9cm x 14.8cm | 19.2in x 12.4in x 6.1in 48.8cm x 31.4cm x 15.4cm |
| CD2-8C | Solid bottom | 17.2in x 11.4in x 7.5in 43.6cm x 28.9cm x 19.1cm | 19.2in x 12.4in x 7.8in 48.8cm x 31.4cm x 19.8cm |
| Mid-Length Baskets - Perforated | | | |
| BP2-2A | Standard handles | 16.4in x 10.4in x 1.9in 41.5cm x 26.4cm x 4.8cm | 16.5in x 10.6in x 2.5in 41.9cm x 26.9cm x 6.4cm |
| BP2-3A | Standard handles | 16.4in x 10.4in x 2.6in 41.5cm x 26.4cm x 6.6cm | 16.5in x 10.6in x 3.2in 41.9cm x 26.9cm x 8.2cm |
| BP2-4A | Standard handles | 16.4in x 10.4in x 3.6in 41.5cm x 26.4cm x 9.1cm | 16.5in x 10.6in x 4.2in 41.9cm x 26.9cm x 10.7cm |
| BP2-5A | Standard handles | 16.4in x 10.4in x 4.5in 41.5cm x 26.4cm x 11.4cm | 16.5in x 10.6in x 5.1in 41.9cm x 26.9cm x 12.8cm |
| BP2-6A | Standard handles | 16.4in x 10.4in x 5.4in 41.5cm x 26.4cm x 13.7cm | 16.5in x 10.6in x 6in 41.9cm x 26.9cm x 15.2cm |
| BP2-2V | Vertical handles | 16.4in x 10.4in x 1.8in 41.5cm x 26.4cm x 4.6cm | 16.5in x 10.6in x 2.4in 41.9cm x 26.9cm x 6.2cm |
| BP2-3V | Vertical handles | 16.4in x 10.4in x 2.6in 41.5cm x 26.4cm x 6.6cm | 16.5in x 10.6in x 3.2in 41.9cm x 26.9cm x 8.2cm |
| BP2-4V | Vertical handles | 16.4in x 10.4in x 3.6in 41.5cm x 26.4cm x 9.1cm | 16.5in x 10.6in x 4.2in 41.9cm x 26.9cm x 10.7cm |
| Mid-Length Baskets - Stacking. Perforated with solid sides | | | |
| BP2-1AS | Standard handles | 16in x 10in x 0.8in 40.6cm x 25.3cm x 2cm | 16.2in x 10.2in x 1.4in 41.2cm x 25.9cm x 3.5cm |
| BP2-2AS | Standard handles | 16in x 10in x 1.8in 40.6cm x 25.3cm x 4.6cm | 16.2in x 10.2in x 2.4in 41.2cm x 25.9cm x 6cm |
| BP2-2VS | Vertical handles | 16in x 10in x 1.8in 40.6cm x 25.3cm x 4.6cm | 16.2in x 10.2in x 2.4in 41.2cm x 25.9cm x 6cm |
| Color lids | | Lid color | Catalog number extension |
| | | Gold | -GOLD |
| | | Purple | -PURPLE |
| | | Blue | -BLUE |
| | | Green | -GREEN |
| | | Red | -RED |
| | | Black | -BLACK |

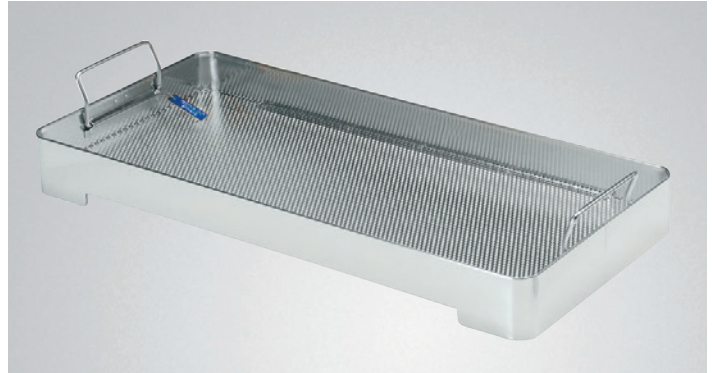
To order any Genesis container with a colored lid, simply add the color extension to the end of the catalog number.

For example, to order the Genesis full-size 6"-deep, perforated bottom container with a gold lid, order catalog number CD3-6B-GOLD.

Containers ordered without a color extension on the catalog number have the standard gray lid.

Genesis® Sterilization Containers and Baskets

| Cat. No. | Description | Inside Dim. L x W x H | Outside Dim. L x W x H |
|--|-------------------|---|---|
| Full-Length Containers | | | |
| CD3-4B | Perforated bottom | 21in x 11.4in x 4.2in 53.3cm x 28.9cm x 10.7cm | 23.1in x 12.4in x 4.5in 58.6cm x 31.4cm x 11.4cm |
| CD3-5B | Perforated bottom | 21in x 11.4in x 5.1in 53.3cm x 28.9cm x 12.9cm | 23.1in x 12.4in x 5.3in 58.6cm x 31.4cm x 13.5cm |
| CD3-6B | Perforated bottom | 21in x 11.4in x 5.8in 53.3cm x 28.9cm x 14.8cm | 23.1in x 12.4in x 6.1in 58.6cm x 31.4cm x 15.4cm |
| CD3-7B | Perforated bottom | 21in x 11.4in x 6.8in 53.3cm x 28.9cm x 17.2cm | 23.1in x 12.4in x 7in 58.6cm x 31.4cm x 17.9cm |
| CD3-4C | Solid bottom | 21in x 11.4in x 4.2in 53.3cm x 28.9cm x 10.7cm | 23.1in x 12.4in x 4.5in 58.6cm x 31.4cm x 11.4cm |
| CD3-5C | Solid bottom | 21in x 11.4in x 5.1in 53.3cm x 28.9cm x 12.9cm | 23.1in x 12.4in x 5.3in 58.6cm x 31.4cm x 13.5cm |
| CD3-6C | Solid bottom | 21in x 11.4in x 5.8in 53.3cm x 28.9cm x 14.8cm | 23.1in x 12.4in x 6.1in 58.6cm x 31.4cm x 15.4cm |
| CD3-7C | Solid bottom | 21in x 11.4in x 6.8in 53.3cm x 28.9cm x 17.2cm | 23.1in x 12.4in x 7in 58.6cm x 31.4cm x 17.9cm |
| Full-Length Baskets - Perforated | | | |
| BP3-2A | Standard handles | 20.3in x 10.4in x 1.8in 51.6cm x 26.4cm x 4.6cm | 20.5in x 10.6in x 2.4in 52.1cm x 26.9cm x 6.1cm |
| BP3-3A | Standard handles | 20.3in x 10.4in x 2.6in 51.6cm x 26.4cm x 6.6cm | 20.5in x 10.6in x 3.2in 52.1cm x 26.9cm x 8.1cm |
| BP3-4A | Standard handles | 20.3in x 10.4in x 3.6in 51.6cm x 26.4cm x 9.1cm | 20.5in x 10.6in x 4.2in 52.1cm x 26.9cm x 10.7cm |
| BP3-5A | Standard handles | 20.3in x 10.4in x 4.5in 51.6cm x 26.4cm x 11.4cm | 20.5in x 10.6in x 5.1in 52.1cm x 26.9cm x 12.8cm |
| BP3-2V | Vertical handles | 20.3in x 10.4in x 1.8in 51.6cm x 26.4cm x 4.6cm | 20.5in x 10.6in x 2.4in 52.1cm x 26.9cm x 6.1cm |
| BP3-3V | Vertical handles | 20.3in x 10.4in x 2.6in 51.6cm x 26.4cm x 6.6cm | 20.5in x 10.6in x 3.2in 52.1cm x 26.9cm x 8.1cm |
| BP3-4V | Vertical handles | 20.3in x 10.4in x 3.6in 51.6cm x 26.4cm x 9.1cm | 20.5in x 10.6in x 4.2in 52.1cm x 26.9cm x 10.7cm |
| BP3-5V | Vertical handles | 20.3in x 10.4in x 4.5in 51.6cm x 26.4cm x 11.4cm | 20.5in x 10.6in x 5.1in 52.1cm x 26.9cm x 12.8cm |
| Full-Length Baskets - Stacking. Perforated with solid sides | | | |
| BP3-1AS | Standard handles | 20in x 10in x 0.8in 50.8cm x 25.4cm x 2cm | 20.2in x 10.2in x 1.4in 51.3cm x 25.9cm x 3.5cm |
| BP3-2AS | Standard handles | 20in x 10in x 1.8in 50.8cm x 25.4cm x 4.6cm | 20.2in x 10.2in x 2.4in 51.3cm x 25.9cm x 6.1cm |
| BP3-2VS | Vertical handles | 20in x 10in x 1.8in 50.8cm x 25.4cm x 4.6cm | 20.2in x 10.2in x 2.4in 51.3cm x 25.9cm x 6.1cm |



Stacking basket



Standard handle basket

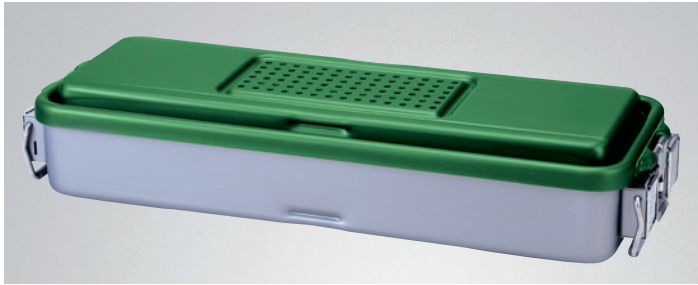


Vertical handle basket



Mid-length baskets

Genesis® Sterilization Containers and Baskets



Small narrow container

| Cat. No. | Description | Inside Dim. L x W x H | Outside Dim. L x W x H |
|--|-------------------|---|--|
| Small Narrow Containers | | | |
| CD4-3B | Perforated bottom | 19in x 6.5in x 3.7in 48.3cm x 16.5cm x 9.3cm | 20.8in x 7.3in x 3.9in 52.9cm x 18.4cm x 9.9cm |
| CD4-5B | Perforated bottom | 19in x 6.5in x 5in 48.3cm x 16.5cm x 12.7cm | 20.8in x 7.3in x 5.2in 52.9cm x 18.4cm x 13.3cm |
| CD4-3C | Solid bottom | 19in x 6.5in x 3.7in 48.3cm x 16.5cm x 9.3cm | 20.8in x 7.3in x 3.9in 52.9cm x 18.4cm x 9.9cm |
| CD4-5C | Solid bottom | 19in x 6.5in x 5in 48.3cm x 16.5cm x 12.7cm | 20.8in x 7.3in x 5.2in 52.9cm x 18.4cm x 13.3cm |
| Small Narrow Baskets - Perforated | | | |
| BP4-2A | Standard handles | 18in x 5.5in x 1.7in 45.7cm x 14cm x 4.3cm | 18.3in x 5.8in x 2.3in 46.4cm x 14.6cm x 5.8cm |
| BP4-4A | Standard handles | 18in x 5.5in x 3.4in 45.7cm x 14cm x 8.6cm | 18.3in x 5.8in x 4in 46.4cm x 14.6cm x 10.2cm |
| BP4-2V | Vertical handles | 18in x 5.5in x 1.7in 45.7cm x 14cm x 4.3cm | 18.3in x 5.8in x 2.3in 46.4cm x 14.6cm x 5.8cm |
| BP4-4V | Vertical handles | 18in x 5.5in x 3.4in 45.7cm x 14cm x 8.6cm | 18.3in x 5.8in x 4in 46.4cm x 14.6cm x 10.2cm |



Retractor container

| Cat. No. | Description | Inside Dim. L x W x H | Outside Dim. L x W x H |
|---------------------------------------|-------------------|--|---|
| Retractor Containers | | | |
| CD6-6B | Perforated bottom | 24in x 15.3in x 6.7in 61cm x 38.8cm x 17cm | 26.5in x 17in x 6.9in 67.3cm x 43.2cm x 17.6cm |
| CD6-6C | Solid bottom | 24in x 15.3in x 6.7in 61cm x 38.8cm x 17cm | 26.5in x 17in x 6.9in 67.3cm x 43.2cm x 17.6cm |
| Retractor Baskets - Perforated | | | |
| BP6-4A | Standard handles | 22.8in x 14.9in x 3.6in 57.9cm x 37.8cm x 9.1cm | 23in x 15.1in x 4.2in 58.4cm x 38.4cm x 10.7cm |



Large narrow container with basket

| Cat. No. | Description | Inside Dim. L x W x H | Outside Dim. L x W x H |
|---|-------------------|--|---|
| Large Narrow Containers | | | |
| CD5-3B | Perforated bottom | 26.5in x 8.5in x 4.8in 67.3cm x 21.6cm x 12.1cm | 28.1in x 11.2in x 5in 71.4cm x 28.4cm x 12.6cm |
| CD5-61B | Perforated bottom | 26.5in x 8.5in x 6.3in 67.3cm x 21.6cm x 15.9cm | 28.1in x 11.2in x 6.4in 71.4cm x 28.4cm x 16.3cm |
| CD5-3C | Solid bottom | 26.5in x 8.5in x 4.8in 67.3cm x 21.6cm x 12.1cm | 28.1in x 11.2in x 5in 71.4cm x 28.4cm x 12.6cm |
| CD5-61C | Solid bottom | 26.5in x 8.5in x 6.3in 67.3cm x 21.6cm x 15.9cm | 28.1in x 11.2in x 6.4in 71.4cm x 28.4cm x 16.3cm |
| Large Narrow Baskets - Perforated | | | |
| BP5-2A | Standard handles | 25.5in x 7.9in x 2.1in 64.8cm x 20.1cm x 5.3cm | 25.7in x 8.1in x 2.7in 65.2cm x 20.6cm x 6.9cm |
| BP5-4A | Standard handles | 25.5in x 7.9in x 3.6in 64.8cm x 20.1cm x 9.1cm | 25.7in x 8.1in x 4.2in 65.2cm x 20.6cm x 10.7cm |
| BP5-2V | Vertical handles | 25.5in x 7.9in x 2.1in 64.8cm x 20.1cm x 5.3cm | 25.7in x 8.1in x 2.7in 65.2cm x 20.6cm x 6.9cm |
| BP5-4V | Vertical handles | 25.5in x 7.9in x 3.6in 64.8cm x 20.1cm x 9.1cm | 25.7in x 8.1in x 4.2in 65.2cm x 20.6cm x 10.7cm |
| Large Narrow Baskets - Stacking, Perforated with solid sides | | | |
| BP5-2AS | Standard handles | 25.2in x 7.6in x 1.8in 64cm x 19.3cm x 4.6cm | 25.4in x 7.8in x 2.4in 64.5cm x 19.7cm x 6cm |



Soiled Transport Containers

Solid lid/solid bottom with gasket. Biohazard symbol on lid.

| Cat. No. | Description | Inside Dim. L x W x H | Outside Dim. L x W x H |
|----------|-------------|---|---|
| CR1-6 | Half-length | 9.8in x 11.4in x 5.8in (24.8cm x 28.9cm x 14.8cm) | 11in x 12in x 6in (27.9cm x 30.5cm x 15.2cm) |
| CR2-6 | Mid-length | 17.2in x 11.4in x 5.8in (43.6cm x 28.9cm x 14.8cm) | 19in x 12in x 6in (48.3cm x 30.5cm x 15.2cm) |
| CR3-6 | Full-length | 21in x 11.4in x 5.8in (53.3cm x 28.9cm x 14.8cm) | 23.1in x 12.4in x 6.1in (56cm x 31.4cm x 15.4cm) |



Extra-long container

| Cat. No. | Description | Inside Dim. L x W x H | Outside Dim. L x W x H |
|---|-------------------|--|---|
| Extra-Long Containers | | | |
| CD7-5B | Perforated bottom | 23in x 11.4in x 5.7in 58.4cm x 28.9cm x 14.4cm | 25.2in x 12.4in x 5.9in 63.9cm x 31.6cm x 15.1cm |
| CD7-6B | Perforated bottom | 23in x 11.4in x 6.4in 58.4cm x 28.9cm x 16.3cm | 25.2in x 12.4in x 6.7in 63.9cm x 31.6cm x 17cm |
| CD7-9B | Perforated bottom | 23in x 11.4in x 8.2in 58.4cm x 28.9cm x 20.8cm | 25.2in x 12.4in x 8.4in 63.9cm x 31.6cm x 21.4cm |
| CD7-5C | Solid bottom | 23in x 11.4in x 5.7in 58.4cm x 28.9cm x 14.4cm | 25.2in x 12.5in x 5.9in 63.9cm x 31.6cm x 15.1cm |
| CD7-6C | Solid bottom | 23in x 11.4in x 6.4in 58.4cm x 28.9cm x 16.3cm | 25.2in x 12.4in x 6.7in 63.9cm x 31.6cm x 17cm |
| CD7-9C | Solid bottom | 23in x 11.4in x 8.2in 58.4cm x 28.9cm x 20.8cm | 25.2in x 12.4in x 8.4in 63.9cm x 31.6cm x 21.4cm |
| Extra-Long Baskets - Perforated | | | |
| BP7-3A | Standard handles | 22.3in x 10.4in x 2.6in 56.6cm x 26.4cm x 6.6cm | 22.5in x 10.6in x 3.2in 57.2cm x 26.9cm x 8.1cm |
| BP7-4A | Standard handles | 22.3in x 10.4in x 3.6in 56.6cm x 26.4cm x 9.1cm | 22.5in x 10.6in x 4.2in 57.2cm x 26.9cm x 10.7cm |
| Extra-Long Baskets - Stacking, Perforated with solid sides | | | |
| BP7-2AS | Standard handles | 22.1in x 10in x 1.8in 56.1cm x 25.4cm x 4.6cm | 22.3in x 10.2in x 2.4in 56.5cm x 25.9cm x 6.1cm |
| BP7-4AS | Standard handles | 22.1in x 10in x 3.4in 56.1cm x 25.4cm x 8.6cm | 22.3in x 10.2in x 4in 56.5cm x 25.9cm x 10.2cm |



Genesis Lifting Platforms

Solid sides. Perforated bottom.

| Cat. No. | Description | Inside Dim. L x W x H | Outside Dim. L x W x H |
|----------|--------------------------------------|---|--|
| LP3-1 | Lifting Platform, Full | 20.3in x 10.4in x 0.75in (51.5cm x 26.4cm x 1.9cm) | 20.5in x 10.6in x 1.3in (52.1cm x 27cm x 3.4cm) |
| LP7-1 | Lifting Platform, XL (short handles) | 22.3in x 10.4in x 0.7in (56.6cm x 26.4cm x 1.8cm) | 22.5in x 10.6in x 1.3 (57.2cm x 27cm x 3.4cm) |
| LP7-2 | Lifting Platform, XL (long handles) | 22.3in x 10.4in x 0.7in (56.6cm x 26.4cm x 1.8cm) | 22.5in x 10.6in x 1.3 (57.2cm x 27cm x 3.4cm) |



Deep lid container

Genesis Deep Lid Containers

| Cat. No. | Description | Inside Dim. L x W x H | Outside Dim. L x W x H |
|--------------------|-------------------------|---|---|
| Half-Length | | | |
| CD1-7BDL | Perforated bottom | 9.8in x 11.4in x 6.7in 24.8cm x 28.9cm x 17cm | 11.9in x 12.5in x 7.5in 30.1cm x 31.7cm x 19.1cm |
| CD1-7CDL | Solid bottom | 9.8in x 11.4in x 6.7in 24.8cm x 28.9cm x 17cm | 11.9in x 12.5in x 7.5in 30.1cm x 31.7cm x 19.1cm |
| CD1-8BDL | Perforated bottom | 9.8in x 11.4in x 7.5in 24.8cm x 28.9cm x 18.9cm | 11.9in x 12.5in x 8.3in 30.1cm x 31.7cm x 21cm |
| Mid-Length | | | |
| CD2-10BDL | Perforated bottom | 17.2in x 11.4in x 9.2in 43.6cm x 28.9cm x 23.3cm | 19.2in x 12.5in x 9.4in 48.8cm x 31.6cm x 23.9cm |
| CD2-10CDL | Solid bottom | 17.2in x 11.4in x 9.2in 43.6cm x 28.9cm x 23.3cm | 19.2in x 12.5in x 9.4in 48.8cm x 31.6cm x 23.9cm |
| CD2-7BDL | Perforated bottom | 17.2in x 11.4in x 6.7in 43.6cm x 28.9cm x 17cm | 19.2in x 12.5in x 7in 48.8cm x 31.6cm x 17.7cm |
| CD2-7CDL | Solid bottom | 17.2in x 11.4in x 6.7in 43.6cm x 28.9cm x 17cm | 19.2in x 12.5in x 7in 48.8cm x 31.6cm x 17.7cm |
| Full-Length | | | |
| CD3-8BDL | Perforated bottom | 21in x 11.4in x 7.6in 53.3cm x 28.9cm x 19.2cm | 23.1in x 12.5in x 7.8in 58.7cm x 31.7cm x 19.8cm |
| CD3-8CDL | Solid bottom | 21in x 11.4in x 7.6in 53.3cm x 28.9cm x 19.2cm | 23.1in x 12.5in x 7.8in 58.7cm x 31.7cm x 19.8cm |
| CD3-9BDL | Perforated bottom | 21in x 11.4in x 8.5in 53.3cm x 28.9cm x 21.6cm | 23.1in x 12.5in x 8.8in 58.7cm x 31.7cm x 22.2cm |
| CD3-9CDL | Solid bottom | 21in x 11.4in x 8.5in 53.3cm x 28.9cm x 21.6cm | 23.1in x 12.5in x 8.8in 58.7cm x 31.7cm x 22.2cm |
| Lid Only | | | |
| DL1-1 | Fits half-length bottom | | |
| DL2-1 | Fits mid-length bottom | | |
| DL3-1 | Fits full-length bottom | | |

| Color lids | Lid color | Catalog number extension |
|------------|-----------|--------------------------|
| | Gold | -GOLD |
| | Purple | -PURPLE |
| | Blue | -BLUE |
| | Green | -GREEN |
| | Red | -RED |
| | Black | -BLACK |

To order any Genesis container with a colored lid, simply add the color extension to the end of the catalog number.

For example, to order the Genesis full-size 6"-deep, perforated bottom container with a gold lid, order catalog number CD3-6B-GOLD.

Containers ordered without a color extension on the catalog number have the standard gray lid.

Genesis® Sterilization Containers and Baskets



Mini container and basket

| Cat. No. | Description | Inside Dim. L x W x H | Outside Dim. L x W x H |
|---------------------------------|-------------------|--|--|
| Mini Containers | | | |
| CD0-3B | Perforated bottom | 9.2in x 5.1in x 3.1in 23.3cm x 12.9cm x 7.8cm | 10.2in x 7.2in x 3.2in 26cm x 18.3cm x 8cm |
| CD0-3C | Solid bottom | 9.2in x 5.1in x 3.1in 23.3cm x 12.9cm x 7.8cm | 10.2in x 7.2in x 3.2in 26cm x 18.3cm x 8cm |
| Mini Basket - Perforated | | | |
| BP0-1A | | 8.9in x 4.7in x 1.6in 22.6cm x 11.9cm x 4cm | 9.1in x 5in x 1.6in 23.2cm x 12.7cm x 4.1cm |



Quarter-length container and basket

| Cat. No. | Description | Inside Dim. L x W x H | Outside Dim. L x W x H |
|--|-------------------|---|---|
| Quarter-Length Containers | | | |
| CD0-4B | Perforated bottom | 7.6in x 11.6in x 3.5in 19.4cm x 29.5cm x 8.9cm | 9.5in x 12.4in x 3.8in 24cm x 31.4cm x 9.5cm |
| CD0-4C | Solid bottom | 7.6in x 11.6in x 3.5in 19.4cm x 29.5cm x 8.9cm | 9.5in x 12.4in x 3.8in 24cm x 31.4cm x 9.5cm |
| Quarter-Length Baskets - Perforated | | | |
| BP0-2A | Standard handles | 6.8in x 10.9in x 1.8in 17.3cm x 27.7cm x 4.7cm | 7in x 11.1in x 2.4in 17.8cm x 28.2cm x 6.2cm |
| BP0-2V | Vertical handles | 6.8in x 10.9in x 1.8in 17.3cm x 27.7cm x 4.7cm | 7in x 11.1in x 2.4in 17.8cm x 28.2cm x 6.2cm |



Half-length, full-length and small narrow STERRAD-system compatible containers

STERRAD® System Compatible Containers

Specially marked with plasma pink gaskets, handles and ID tags. Uses standard Genesis baskets.

| Cat. No. | Inside Dim. L x W x H | Outside Dim. L x W x H |
|-----------------------|---|---|
| Quarter-Length | | |
| CD0-4ST | 7.6in x 11.6in x 3.5in 19.4cm x 29.5cm x 8.9cm | 9.5in x 12.4in x 3.8in 24cm x 31.4cm x 9.5cm |
| Half-Length | | |
| CD1-4ST | 9.8in x 11.4in x 4.2in 24.8cm x 28.9cm x 10.7cm | 11.8in x 12.4in x 4.5in 30cm x 31.4cm x 11.4cm |
| CD1-5ST | 9.8in x 11.4in x 5.1in 24.8cm x 28.9cm x 12.9cm | 11.8in x 12.4in x 5.3in 30cm x 31.4cm x 13.5cm |
| CD1-6ST | 9.8in x 11.4in x 5.8in 24.8cm x 28.9cm x 14.8cm | 11.8in x 12.4in x 6.1in 30cm x 31.4cm x 15.4cm |
| Mid-Length | | |
| CD2-4ST | 17.2in x 11.4in x 4.2in 43.6cm x 28.9cm x 10.7cm | 19.2in x 12.4in x 4.5in 48.8cm x 31.4cm x 11.4cm |
| CD2-5ST | 17.2in x 11.4in x 5.1in 43.6cm x 28.9cm x 12.9cm | 19.2in x 12.4in x 5.3in 48.8cm x 31.4cm x 13.5cm |
| CD2-6ST | 17.2in x 11.4in x 5.8in 43.6cm x 28.9cm x 14.8cm | 19.2in x 12.4in x 6.1in 48.8cm x 31.4cm x 15.4cm |
| CD2-8ST | 17.2in x 11.4in x 7.5in 43.6cm x 28.9cm x 19.1cm | 19.2in x 12.4in x 7.8in 48.8cm x 31.4cm x 19.8cm |
| Full-Length | | |
| CD3-4ST | 21in x 11.4in x 4.2in 53.3cm x 28.9cm x 10.7cm | 23.1in x 12.4in x 4.5in 58.6cm x 31.4cm x 11.4cm |
| CD3-5ST | 21in x 11.4in x 5.1in 53.3cm x 28.9cm x 12.9cm | 23.1in x 12.4in x 5.3in 58.6cm x 31.4cm x 13.5cm |
| CD3-6ST | 21in x 11.4in x 5.8in 53.3cm x 28.9cm x 14.8cm | 23.1in x 12.4in x 6.1in 58.6cm x 31.4cm x 15.4cm |
| CD3-7ST | 21in x 11.4in x 6.8in 53.3cm x 28.9cm x 17.2cm | 23.1in x 12.4in x 7in 58.6cm x 31.4cm x 17.9cm |
| Small Narrow | | |
| CD4-3ST | 19in x 6.5in x 3.7in 48.3cm x 16.5cm x 9.3cm | 20.8in x 7.3in x 3.9in 52.9cm x 18.4cm x 9.9cm |
| CD4-5ST | 19in x 6.5in x 5in 48.3cm x 16.5cm x 12.7cm | 20.8in x 7.3in x 5.2in 52.9cm x 18.4cm x 13.3cm |
| Large Narrow | | |
| CD5-3ST | 26.5in x 8.5in x 4.8in 67.3cm x 21.6cm x 12.1cm | 28.1in x 11.2in x 5in 71.4cm x 28.4cm x 12.6cm |
| CD5-61ST | 26.5in x 8.5in x 6.3in 67.3cm x 21.6cm x 15.9cm | 28.1in x 11.2in x 6.4in 71.4cm x 28.4cm x 16.3cm |
| Mini | | |
| CD0-3ST | 9.2in x 5.1in x 3.1in 23.3cm x 12.9cm x 7.8cm | 10.2in x 7.2in x 3.2in 26cm x 18.3cm x 8cm |

Genesis colored lids

Genesis container lids are available in a wide range of colors to help you easily identify sets and specialty-specific trays. Use this chart to new, colored lids for your existing containers.

| Cat. No. | Description |
|---------------|---|
| CL1394-GOLD | Genesis Lid, Mini, Gold, with Retention Plate |
| CL1394-PURPLE | Genesis Lid, Mini, Purple, with Retention Plate |
| CL1394-BLUE | Genesis Lid, Mini, Blue, with Retention Plate |
| CL1394-GREEN | Genesis Lid, Mini, Green, with Retention Plate |
| CL1394-RED | Genesis Lid, Mini, Red, with Retention Plate |
| CL1394-BLACK | Genesis Lid, Mini, Black, with Retention Plate |
| CL1187-GOLD | Genesis Lid, Qtr, Gold, with Retention Plate |
| CL1187-PURPLE | Genesis Lid, Qtr, Purple, with Retention Plate |
| CL1187-BLUE | Genesis Lid, Qtr, Blue, with Retention Plate |
| CL1187-GREEN | Genesis Lid, Qtr, Green, with Retention Plate |
| CL1187-RED | Genesis Lid, Qtr, Red, with Retention Plate |
| CL1187-BLACK | Genesis Lid, Qtr, Black, with Retention Plate |
| CL1041-GOLD | Genesis Lid, Half, Gold, with Retention Plate |
| CL1041-PURPLE | Genesis Lid, Half, Purple, with Retention Plate |
| CL1041-BLUE | Genesis Lid, Half, Blue, with Retention Plate |
| CL1041-GREEN | Genesis Lid, Half, Green, with Retention Plate |
| CL1041-RED | Genesis Lid, Half, Red, with Retention Plate |
| CL1041-BLACK | Genesis Lid, Half, Black, with Retention Plate |
| CL1043-GOLD | Genesis Lid, Mid, Gold, with Retention Plate |
| CL1043-PURPLE | Genesis Lid, Mid, Purple, with Retention Plate |
| CL1043-BLUE | Genesis Lid, Mid, Blue, with Retention Plate |
| CL1043-GREEN | Genesis Lid, Mid, Green, with Retention Plate |
| CL1043-RED | Genesis Lid, Mid, Red, with Retention Plate |
| CL1043-BLACK | Genesis Lid, Mid, Black, with Retention Plate |
| CL1039-GOLD | Genesis Lid, Full, Gold, with Retention Plate |
| CL1039-PURPLE | Genesis Lid, Full, Purple, with Retention Plate |
| CL1039-BLUE | Genesis Lid, Full, Blue, with Retention Plate |
| CL1039-GREEN | Genesis Lid, Full, Green, with Retention Plate |
| CL1039-RED | Genesis Lid, Full, Red, with Retention Plate |
| CL1039-BLACK | Genesis Lid, Full, Black, with Retention Plate |
| CL1381-GOLD | Genesis Lid, Sm Narrow, Gold, with Retention Plate |
| CL1381-PURPLE | Genesis Lid, Sm Narrow, Purple, with Retention Plate |
| CL1381-BLUE | Genesis Lid, Sm Narrow, Blue, with Retention Plate |
| CL1381-GREEN | Genesis Lid, Sm Narrow, Green, with Retention Plate |
| CL1381-RED | Genesis Lid, Sm Narrow, Red, with Retention Plate |
| CL1381-BLACK | Genesis Lid, Sm Narrow, Black, with Retention Plate |
| CL1769-GOLD | Genesis Lid, Lg Nrw Shallow, Gold, with Retention Plate |
| CL1769-PURPLE | Genesis Lid, Lg Nrw Shallow, Purple, with Retention Plate |
| CL1769-BLUE | Genesis Lid, Lg Nrw Shallow, Blue, with Retention Plate |
| CL1769-GREEN | Genesis Lid, Lg Nrw Shallow, Green, with Retention Plate |
| CL1769-RED | Genesis Lid, Lg Nrw Shallow, Red, with Retention Plate |
| CL1769-BLACK | Genesis Lid, Lg Nrw Shallow, Black, with Retention Plate |
| CL1388-GOLD | Genesis Lid, Lg Narrow, Gold, with Retention Plate |
| CL1388-PURPLE | Genesis Lid, Lg Narrow, Purple, with Retention Plate |
| CL1388-BLUE | Genesis Lid, Lg Narrow, Blue, with Retention Plate |
| CL1388-GREEN | Genesis Lid, Lg Narrow, Green, with Retention Plate |
| CL1388-RED | Genesis Lid, Lg Narrow, Red, with Retention Plate |
| CL1388-BLACK | Genesis Lid, Lg Narrow, Black, with Retention Plate |
| CL1047-GOLD | Genesis Lid, Retractor, Gold, with Retention Plate |
| CL1047-PURPLE | Genesis Lid, Retractor, Purple, with Retention Plate |
| CL1047-BLUE | Genesis Lid, Retractor, Blue, with Retention Plate |
| CL1047-GREEN | Genesis Lid, Retractor, Green, with Retention Plate |
| CL1047-RED | Genesis Lid, Retractor, Red, with Retention Plate |



| Cat. No. | Description |
|---------------|--|
| CL1047-BLACK | Genesis Lid, Retractor, Black, with Retention Plate |
| CL1850-GOLD | Genesis Lid, XL Standard, Gold, with Retention Plate |
| CL1850-PURPLE | Genesis Lid, XL Standard, Purple, with Retention Plate |
| CL1850-BLUE | Genesis Lid, XL Standard, Blue, with Retention Plate |
| CL1850-GREEN | Genesis Lid, XL Standard, Green, with Retention Plate |
| CL1850-RED | Genesis Lid, XL Standard, Red, with Retention Plate |
| CL1850-BLACK | Genesis Lid, XL Standard, Black, with Retention Plate |
| CL1851-GOLD | Genesis Lid, XL 2-1/4", Gold, with Retention Plate |
| CL1851-PURPLE | Genesis Lid, XL 2-1/4", Purple, with Retention Plate |
| CL1851-BLUE | Genesis Lid, XL 2-1/4", Blue, with Retention Plate |
| CL1851-GREEN | Genesis Lid, XL 2-1/4", Green, with Retention Plate |
| CL1851-RED | Genesis Lid, XL 2-1/4", Red, with Retention Plate |
| CL1851-BLACK | Genesis Lid, XL 2-1/4", Black, with Retention Plate |
| CL1853-GOLD | Genesis Lid, XL 3-1/2", Gold, with Retention Plate |
| CL1853-PURPLE | Genesis Lid, XL 3-1/2", Purple, with Retention Plate |
| CL1853-BLUE | Genesis Lid, XL 3-1/2", Blue, with Retention Plate |
| CL1853-GREEN | Genesis Lid, XL 3-1/2", Green, with Retention Plate |
| CL1853-RED | Genesis Lid, XL 3-1/2", Red, with Retention Plate |
| CL1853-BLACK | Genesis Lid, XL 3-1/2", Black, with Retention Plate |
| CL1693-GOLD | Genesis Lid, Half, Deep, Gold, with Retention Plate |
| CL1693-PURPLE | Genesis Lid, Half, Deep, Purple, with Retention Plate |
| CL1693-BLUE | Genesis Lid, Half, Deep, Blue, with Retention Plate |
| CL1693-GREEN | Genesis Lid, Half, Deep, Green, with Retention Plate |
| CL1693-RED | Genesis Lid, Half, Deep, Red, with Retention Plate |
| CL1693-BLACK | Genesis Lid, Half, Deep, Black, with Retention Plate |
| CL1694-GOLD | Genesis Lid, Mid, Deep, Gold, with Retention Plate |
| CL1694-PURPLE | Genesis Lid, Mid, Deep, Purple, with Retention Plate |
| CL1694-BLUE | Genesis Lid, Mid, Deep, Blue, with Retention Plate |
| CL1694-GREEN | Genesis Lid, Mid, Deep, Green, with Retention Plate |
| CL1694-RED | Genesis Lid, Mid, Deep, Red, with Retention Plate |
| CL1694-BLACK | Genesis Lid, Mid, Deep, Black, with Retention Plate |
| CL1695-GOLD | Genesis Lid, Full, Deep, Gold, with Retention Plate |
| CL1695-PURPLE | Genesis Lid, Full, Deep, Purple, with Retention Plate |
| CL1695-BLUE | Genesis Lid, Full, Deep, Blue, with Retention Plate |
| CL1695-GREEN | Genesis Lid, Full, Deep, Green, with Retention Plate |
| CL1695-RED | Genesis Lid, Full, Deep, Red, with Retention Plate |
| CL1695-BLACK | Genesis Lid, Full, Deep, Black, with Retention Plate |

Genesis® DIN-SIZE Sterilization Container Accessories

Genesis Containers and Baskets

| Cat. No. | Description | Inside Dim. L x W x H | Outside Dim. L x W x H |
|-------------------------------|-------------------|--|---|
| Half-Length Containers | | | |
| DINCD1-5B | Perforated bottom | 9.5in x 10.4in x 5.1in 24.1cm x 26.4cm x 12.9cm | 11.6in x 11.4in x 5.4in 29.4cm x 28.9cm x 13.7cm |
| DINCD1-6B | Perforated bottom | 9.5in x 10.4in x 5.8in 24.1cm x 26.4cm x 14.8cm | 11.6in x 11.4in x 6.1in 29.4cm x 28.9cm x 15.6cm |
| DINCD1-5C | Solid bottom | 9.5in x 10.4in x 5.1in 24.1cm x 26.4cm x 12.9cm | 11.6in x 11.4in x 5.4in 29.4cm x 28.9cm x 13.7cm |
| DINCD1-6C | Solid bottom | 9.5in x 10.4in x 5.8in 24.1cm x 26.4cm x 14.8cm | 11.6in x 11.4in x 6.1in 29.4cm x 28.9cm x 15.6cm |

| Half-Length Baskets - Perforated | | | |
|---|------------------|--|---|
| DINBP1-2A | Standard handles | 8.8in x 9.4in x 1.8in 22.4cm x 23.9cm x 4.6cm | 9in x 9.6in x 2.4in 22.9cm x 24.4cm x 6.2cm |
| DINBP1-3A | Standard handles | 8.8in x 9.4in x 2.6in 22.4cm x 23.9cm x 6.6cm | 9in x 9.6in x 3.2in 22.9cm x 24.4cm x 8.2cm |
| DINBP1-4A | Standard handles | 8.8in x 9.4in x 3.6in 22.4cm x 23.9cm x 9.1cm | 9in x 9.6in x 4.2in 22.9cm x 24.4cm x 10.7cm |
| DINBP1-2V | Vertical handles | 8.8in x 9.4in x 1.8in 22.4cm x 23.9cm x 4.6cm | 9in x 9.6in x 2.4in 22.9cm x 24.4cm x 6.2cm |
| DINBP1-3V | Vertical handles | 8.8in x 9.4in x 2.6in 22.4cm x 23.9cm x 6.6cm | 9in x 9.6in x 3.2in 22.9cm x 24.4cm x 8.2cm |
| DINBP1-4V | Vertical handles | 8.8in x 9.4in x 3.6in 22.4cm x 23.9cm x 9.1cm | 9in x 9.6in x 4.2in 22.9cm x 24.4cm x 10.7cm |






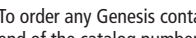
| Half-Length Baskets - Stacking. Perforated with solid sides | | | |
|--|------------------|--|--|
| DINBP1-2AS | Standard handles | 8.5in x 9in x 1.8in 21.6cm x 22.9cm x 4.6cm | 8.7in x 9.2in x 2.4in 22.1cm x 23.4cm x 6.1cm |
| DINBP1-2VS | Vertical handles | 8.5in x 9in x 1.8in 21.6cm x 22.9cm x 4.6cm | 8.7in x 9.2in x 2.4in 22.1cm x 23.4cm x 6.1cm |

| Cat. No. | Description | Inside Dim. L x W x H | Outside Dim. L x W x H |
|------------------------------|-------------------|---|---|
| Mid-Length Containers | | | |
| DINCD2-5B | Perforated bottom | 17.1in x 10.4in x 5.1in 43.5cm x 26.4cm x 12.9cm | 19.2in x 11.4in x 5.4in 48.7cm x 28.9cm x 13.7cm |
| DINCD2-6B | Perforated bottom | 17.1in x 10.4in x 5.8in 43.5cm x 26.4cm x 14.8cm | 19.2in x 11.4in x 6.1in 48.7cm x 28.9cm x 15.6cm |
| DINCD2-8B | Perforated bottom | 17.1in x 10.4in x 7.5in 43.5cm x 26.4cm x 19.1cm | 19.2in x 11.4in x 7.8in 48.7cm x 28.9cm x 19.9cm |
| DINCD2-5C | Solid bottom | 17.1in x 10.4in x 5.1in 43.5cm x 26.4cm x 12.9cm | 19.2in x 11.4in x 5.4in 48.7cm x 28.9cm x 13.7cm |
| DINCD2-6C | Solid bottom | 17.1in x 10.4in x 5.8in 43.5cm x 26.4cm x 14.8cm | 19.2in x 11.4in x 6.1in 48.7cm x 28.9cm x 15.6cm |
| DINCD2-8C | Solid bottom | 17.1in x 10.4in x 7.5in 43.5cm x 26.4cm x 19.1cm | 19.2in x 11.4in x 7.8in 48.7cm x 28.9cm x 19.9cm |

| Mid-Length Baskets - Perforated | | | |
|--|------------------|---|--|
| DINBP2-2A | Standard handles | 16.3in x 9.4in x 1.8in 41.4cm x 23.9cm x 4.6cm | 16.5in x 9.6in x 2.4in 41.9cm x 24.4cm x 6.1cm |
| DINBP2-3A | Standard handles | 16.3in x 9.4in x 2.6in 41.4cm x 23.9cm x 6.6cm | 16.5in x 9.6in x 3.2in 41.9cm x 24.4cm x 8.1cm |
| DINBP2-4A | Standard handles | 16.3in x 9.4in x 3.6in 41.4cm x 23.9cm x 9.1cm | 16.5in x 9.6in x 4.2in 41.9cm x 24.4cm x 10.7cm |
| DINBP2-2V | Vertical handles | 16.3in x 9.4in x 1.8in 41.4cm x 23.9cm x 4.6cm | 16.5in x 9.6in x 2.4in 41.9cm x 24.4cm x 6.1cm |
| DINBP2-3V | Vertical handles | 16.3in x 9.4in x 2.6in 41.4cm x 23.9cm x 6.6cm | 16.5in x 9.6in x 3.2in 41.9cm x 24.4cm x 8.1cm |
| DINBP2-4V | Vertical handles | 16.3in x 9.4in x 3.6in 41.4cm x 23.9cm x 9.1cm | 16.5in x 9.6in x 4.2in 41.9cm x 24.4cm x 10.7cm |

| Mid-Length Baskets - Stacking. Perforated with solid sides | | | |
|---|------------------|---|---|
| DINBP2-2AS | Standard handles | 16in x 9in x 1.8in 40.6cm x 22.9cm x 4.6cm | 16.2in x 9.2in x 2.4in 41.1cm x 23.4cm x 6.1cm |
| DINBP2-2VS | Vertical handles | 16in x 9in x 1.8in 40.6cm x 22.9cm x 4.6cm | 16.2in x 9.2in x 2.4in 41.1cm x 23.4cm x 6.1cm |

Genesis colored lids

| Color lids | Lid color | Catalog number extension |
|--|-----------|--------------------------|
|  | Gold | -GOLD |
|  | Purple | -PURPLE |
|  | Blue | -BLUE |
|  | Green | -GREEN |
|  | Red | -RED |
|  | Black | -BLACK |

To order any Genesis container with a colored lid, simply add the color extension to the end of the catalog number.

For example, to order the Genesis full-size 6"-deep, perforated bottom container with a gold lid, order catalog number CD3-6B-GOLD.

Containers ordered without a color extension on the catalog number have the standard gray lid.

Replace Lid

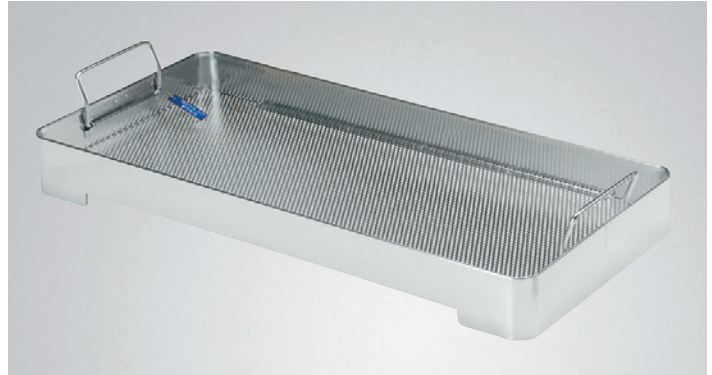
Genesis container lids are available in a wide range of colors to help you easily identify sets and specialty-specific trays. Use this chart to new, colored lids for your existing containers.

| Cat. No. | Description |
|---------------|--|
| CL2076-GOLD | Genesis Replace Lid, DIN Half, Gold, RP |
| CL2076-PURPLE | Genesis Replace Lid, DIN Half, Prple, RP |
| CL2076-BLUE | Genesis Replace Lid, DIN Half, Blue, RP |
| CL2076-GREEN | Genesis Replace Lid, DIN Half, Green, RP |
| CL2076-RED | Genesis Replace Lid, DIN Half, Red, RP |
| CL2076-BLACK | Genesis Replace Lid, DIN Half, Black, RP |
| CL2077-GOLD | Genesis Replace Lid, DIN Mid, Gold, RP |
| CL2077-PURPLE | Genesis Replace Lid, DIN Mid, Purple, RP |
| CL2077-BLUE | Genesis Replace Lid, DIN Mid, Blue, RP |
| CL2077-GREEN | Genesis Replace Lid, DIN Mid, Green, RP |
| CL2077-RED | Genesis Replace Lid, DIN Mid, Red, RP |
| CL2077-BLACK | Genesis Replace Lid, DIN Mid, Black, RP |
| CL2078-GOLD | Genesis Replace Lid, DIN Full, Gold, RP |
| CL2078-PURPLE | Genesis Replace Lid, DIN Full, Prple, RP |
| CL2078-BLUE | Genesis Replace Lid, DIN Full, Blue, RP |
| CL2078-GREEN | Genesis Replace Lid, DIN Full, Green, RP |
| CL2078-RED | Genesis Replace Lid, DIN Full, Red, RP |
| CL2078-BLACK | Genesis Replace Lid, DIN Full, Black, RP |



Genesis® DIN-SIZE Sterilization Container Accessories

| Cat. No. | Description | Inside Dim. L x W x H | Outside Dim. L x W x H |
|--|-------------------|---|---|
| Full-Length Containers | | | |
| DINCD3-5B | Perforated bottom | 21in x 10.4in x 5.1in 53.3cm x 26.4cm x 12.9cm | 23.1in x 11.4in x 5.4in 58.6cm x 28.9cm x 13.7cm |
| DINCD3-6B | Perforated bottom | 21in x 10.4in x 5.8in 53.3cm x 26.4cm x 14.8cm | 23.1in x 11.4in x 6.1in 58.6cm x 28.9cm x 15.6cm |
| DINCD3-7B | Perforated bottom | 21in x 10.4in x 6.8in 53.3cm x 26.4cm x 17.2cm | 23.1in x 11.4in x 7.1in 58.6cm x 28.9cm x 18cm |
| DINCD3-5C | Solid bottom | 21in x 10.4in x 5.1in 53.3cm x 26.4cm x 12.9cm | 23.1in x 11.4in x 5.4in 58.6cm x 28.9cm x 13.7cm |
| DINCD3-6C | Solid bottom | 21in x 10.4in x 5.8in 53.3cm x 26.4cm x 14.8cm | 23.1in x 11.4in x 6.1in 58.6cm x 28.9cm x 15.6cm |
| DINCD3-7C | Solid bottom | 21in x 10.4in x 6.8in 53.3cm x 26.4cm x 17.2cm | 23.1in x 11.4in x 7.1in 58.6cm x 28.9cm x 18cm |
| Full-Length Baskets - Perforated | | | |
| DINBP3-2A | Standard handles | 20.3in x 9.4in x 1.8in 51.6cm x 23.9cm x 4.6cm | 20.5in x 9.6in x 2.4in 52.1cm x 24.4cm x 6.1cm |
| DINBP3-3A | Standard handles | 20.3in x 9.4in x 2.6in 51.6cm x 23.9cm x 6.6cm | 20.5in x 9.6in x 3.2in 52.1cm x 24.4cm x 8.1cm |
| DINBP3-4A | Standard handles | 20.3in x 9.4in x 3.6in 51.6cm x 23.9cm x 9.1cm | 20.5in x 9.6in x 4.2in 52.1cm x 24.4cm x 10.7cm |
| DINBP3-2V | Vertical handles | 20.3in x 9.4in x 1.8in 51.6cm x 23.9cm x 4.6cm | 20.5in x 9.6in x 2.4in 52.1cm x 24.4cm x 6.1cm |
| DINBP3-3V | Vertical handles | 20.3in x 9.4in x 2.6in 51.6cm x 23.9cm x 6.6cm | 20.5in x 9.6in x 3.2in 52.1cm x 24.4cm x 8.1cm |
| DINBP3-4V | Vertical handles | 20.3in x 9.4in x 3.6in 51.6cm x 23.9cm x 9.1cm | 20.5in x 9.6in x 4.2in 52.1cm x 24.4cm x 10.7cm |
| Full-Length Baskets - Stacking, Perforated with solid sides | | | |
| DINBP3-2AS | Standard handles | 20in x 9in x 1.8in 50.8cm x 22.9cm x 4.6cm | 20.2in x 9.2in x 2.4in 51.3cm x 23.4cm x 6.1cm |
| DINBP3-2VS | Vertical handles | 20in x 9in x 1.8in 50.8cm x 22.9cm x 4.6cm | 20.2in x 9.2in x 2.4in 51.3cm x 23.4cm x 6.1cm |



Stacking basket



Standard handle basket



Mid-length baskets



Vertical handle basket

Genesis® Sterilization Containers and Baskets

Genesis Sterilization Containers - Basket Selection Guide

Genesis containers can be easily configured to accommodate a wide variety of instruments with perforated baskets and stacking baskets.

This chart has been designed to help you make selections based on the following guidelines:

- The height of the basket should be two inches less than the height of the container (e.g. 6in (15cm) container height with 4in (10cm) basket height)
- When stacking baskets are used the combined height of the baskets can be one inch less than the container height
- The combinations below will maximize the usable space inside the containers
- Vertical handle baskets (basket code suffix is "V" or "VS") can be used in place of standard "A" or "AS" baskets

| Container | Basket | Basket Inside Dim. L x W x H | Basket Outside Dim. L x W x H |
|--|--|---|--|
| CD0-3* Mini | BP0-1A | 8.9in x 4.7in x 1.6in (22.6cm x 11.9cm x 4cm) | 9.1in x 5in x 1.6in (23.2cm x 12.7cm x 4.1cm) |
| CD0-4* Quarter length | BP0-2A | 6.8in x 10.9in x 1.8in (17.3cm x 27.7cm x 4.7cm) | 7in x 11.1in x 2.4in (17.8cm x 28.2cm x 6.2cm) |
| CD1-4* Half length | BP1-2A | 9.1in x 10.4in x 1.9in (23cm x 26.5cm x 4.8cm) | 9.3in x 10.6in x 2.4in (23.5cm x 27cm x 6.2cm) |
| CD1-5* Half length | BP1-3A alone | 9.1in x 10.4in x 2.6in (23cm x 26.5cm x 6.6cm) | 9.3in x 10.6in x 3.2in (23.5cm x 26.9cm x 8.1cm) |
| | or with BP1-1AS stacking | 8.7in x 10in x 0.8in (22.2cm x 25.4cm x 2cm) | 8.9in x 10.2in x 1.4in (22.7cm x 25.9cm x 3.5cm) |
| | BP1-2A with | 9.1in x 10.4in x 1.9in (23cm x 26.5cm x 4.8cm) | 9.3in x 10.6in x 2.4in (23.5cm x 27cm x 6.2cm) |
| | BP1-1AS stacking | 8.7in x 10in x 0.8in (22.2cm x 25.4cm x 2cm) | 8.9in x 10.2in x 1.4in (22.7cm x 25.9cm x 3.5cm) |
| | or BP1-2AS stacking | 8.7in x 10in x 1.8in (22.2cm x 25.4cm x 4.5cm) | 8.9in x 10.2in x 2.4in (22.7cm x 25.9cm x 6cm) |
| CD1-6* Half length | BP1-4A alone | 9.1in x 10.4in x 3.6in (23.1cm x 26.4cm x 9.1cm) | 9.3in x 10.6in x 4.2in (23.5cm x 26.9cm x 10.7cm) |
| | or with BP1-1AS stacking | 8.7in x 10in x 0.8in (22.2cm x 25.4cm x 2cm) | 8.9in x 10.2in x 1.4in (22.7cm x 25.9cm x 3.5cm) |
| | BP1-3A with | 9.1in x 10.4in x 2.6in (23cm x 26.5cm x 6.6cm) | 9.3in x 10.6in x 3.2in (23.5cm x 26.9cm x 8.1cm) |
| | BP1-1AS stacking | 8.7in x 10in x 0.8in (22.2cm x 25.4cm x 2cm) | 8.9in x 10.2in x 1.4in (22.7cm x 25.9cm x 3.5cm) |
| | or BP1-2AS stacking | 8.7in x 10in x 1.8in (22.2cm x 25.4cm x 4.5cm) | 8.9in x 10.2in x 2.4in (22.7cm x 25.9cm x 6cm) |
| | BP1-2A alone | 9.1in x 10.4in x 1.9in (23cm x 26.5cm x 4.8cm) | 9.3in x 10.6in x 2.4in (23.5cm x 27cm x 6.2cm) |
| | or with BP1-1AS stacking | 8.7in x 10in x 0.8in (22.2cm x 25.4cm x 2cm) | 8.9in x 10.2in x 1.4in (22.7cm x 25.9cm x 3.5cm) |
| or BP1-2AS stacking | 8.7in x 10in x 1.8in (22.2cm x 25.4cm x 4.5cm) | 8.9in x 10.2in x 2.4in (22.7cm x 25.9cm x 6cm) | |
| CD1-7* DL ^{NS} Deep lid, Half length* | BP1-3A alone | 9.1in x 10.4in x 2.6in (23cm x 26.5cm x 6.6cm) | 9.3in x 10.6in x 3.2in (23.5cm x 26.9cm x 8.1cm) |
| | or with BP1-1AS stacking | 8.7in x 10in x 0.8in (22.2cm x 25.4cm x 2cm) | 8.9in x 10.2in x 1.4in (22.7cm x 25.9cm x 3.5cm) |
| | or BP1-2AS stacking | 8.7in x 10in x 1.8in (22.2cm x 25.4cm x 4.5cm) | 8.9in x 10.2in x 2.4in (22.7cm x 25.9cm x 6cm) |
| | BP1-2A with | 9.1in x 10.4in x 1.9in (23cm x 26.5cm x 4.8cm) | 9.3in x 10.6in x 2.4in (23.5cm x 27cm x 6.2cm) |
| | BP1-1AS stacking | 8.7in x 10in x 0.8in (22.2cm x 25.4cm x 2cm) | 8.9in x 10.2in x 1.4in (22.7cm x 25.9cm x 3.5cm) |
| CD1-8* DL ^{NS} Deep lid, Half length* | or BP1-2AS stacking | 8.7in x 10in x 1.8in (22.2cm x 25.4cm x 4.5cm) | 8.9in x 10.2in x 2.4in (22.7cm x 25.9cm x 6cm) |
| | BP1-4A alone | 9.1in x 10.4in x 3.6in (23.1cm x 26.4cm x 9.1cm) | 9.3in x 10.6in x 4.2in (23.5cm x 26.9cm x 10.7cm) |
| | or with BP1-1AS stacking | 8.7in x 10in x 0.8in (22.2cm x 25.4cm x 2cm) | 8.9in x 10.2in x 1.4in (22.7cm x 25.9cm x 3.5cm) |
| | or BP1-2AS stacking | 8.7in x 10in x 1.8in (22.2cm x 25.4cm x 4.5cm) | 8.9in x 10.2in x 2.4in (22.7cm x 25.9cm x 6cm) |
| | BP1-3A with | 9.1in x 10.4in x 2.6in (23cm x 26.5cm x 6.6cm) | 9.3in x 10.6in x 3.2in (23.5cm x 26.9cm x 8.1cm) |
| | BP1-1AS stacking | 8.7in x 10in x 0.8in (22.2cm x 25.4cm x 2cm) | 8.9in x 10.2in x 1.4in (22.7cm x 25.9cm x 3.5cm) |
| | or BP1-2AS stacking | 8.7in x 10in x 1.8in (22.2cm x 25.4cm x 4.5cm) | 8.9in x 10.2in x 2.4in (22.7cm x 25.9cm x 6cm) |
| CD2-4* Mid length | BP2-2A | 16.4in x 10.4in x 1.9in (41.5cm x 26.4cm x 4.8cm) | 16.5in x 10.6in x 2.5in (41.9cm x 26.9cm x 6.4cm) |
| | BP2-3A alone | 16.4in x 10.4in x 2.6in (41.5cm x 26.4cm x 6.6cm) | 16.5in x 10.6in x 3.2in (41.9cm x 26.9cm x 8.2cm) |
| | or with BP2-1AS | 16in x 10in x 0.8in (40.6cm x 25.3cm x 2cm) | 16.2in x 10.2in x 1.4in (41.2cm x 25.9cm x 3.5cm) |
| | BP2-2A with | 16.4in x 10.4in x 1.9in (41.5cm x 26.4cm x 4.8cm) | 16.5in x 10.6in x 2.5in (41.9cm x 26.9cm x 6.4cm) |
| | BP2-1AS stacking | 16in x 10in x 0.8in (40.6cm x 25.3cm x 2cm) | 16.2in x 10.2in x 1.4in (41.2cm x 25.9cm x 3.5cm) |
| CD2-5* Mid length | or BP2-2A stacking | 16.4in x 10.4in x 1.9in (41.5cm x 26.4cm x 4.8cm) | 16.5in x 10.6in x 2.5in (41.9cm x 26.9cm x 6.4cm) |
| | BP2-4A alone | 16.4in x 10.4in x 3.6in (41.5cm x 26.4cm x 9.1cm) | 16.5in x 10.6in x 4.2in (41.9cm x 26.9cm x 10.7cm) |
| | or with BP2-1AS stacking | 16in x 10in x 0.8in (40.6cm x 25.3cm x 2cm) | 16.2in x 10.2in x 1.4in (41.2cm x 25.9cm x 3.5cm) |
| | BP2-3A with | 16.4in x 10.4in x 2.6in (41.5cm x 26.4cm x 6.6cm) | 16.5in x 10.6in x 3.2in (41.9cm x 26.9cm x 8.2cm) |
| | BP2-1AS stacking | 16in x 10in x 0.8in (40.6cm x 25.3cm x 2cm) | 16.2in x 10.2in x 1.4in (41.2cm x 25.9cm x 3.5cm) |
| | or BP2-2AS stacking | 16in x 10in x 1.8in (40.6cm x 25.3cm x 4.6cm) | 16.2in x 10.2in x 2.4in (41.1cm x 25.9cm x 6cm) |
| | BP2-2A with | 16.4in x 10.4in x 1.9in (41.5cm x 26.4cm x 4.8cm) | 16.5in x 10.6in x 2.5in (41.9cm x 26.9cm x 6.4cm) |
| BP2-2AS stacking | 16in x 10in x 1.8in (40.6cm x 25.3cm x 4.6cm) | 16.2in x 10.2in x 2.4in (41.1cm x 25.9cm x 6cm) | |
| CD2-6* Mid length | or BP2-1AS stacking | 16in x 10in x 0.8in (40.6cm x 25.3cm x 2cm) | 16.2in x 10.2in x 1.4in (41.2cm x 25.9cm x 3.5cm) |

Genesis® Sterilization Containers and Baskets

Basket Selection Guide (continued)

| Container | Basket | Basket Inside Dim. L x W x H | Basket Outside Dim. L x W x H |
|--|--|--|--|
| CD2-8* Mid length | BP2-6A | 16.4in x 10.4in x 5.4in (41.5cm x 26.4cm x 13.7cm) | 16.5in x 10.6in x 6in (41.9cm x 26.9cm x 15.2cm) |
| | BP2-4A with | 16.4in x 10.4in x 3.6in (41.5cm x 26.4cm x 9.1cm) | 16.5in x 10.6in x 4.2in (41.9cm x 26.9cm x 10.7cm) |
| | BP2-1AS stacking | 16in x 10in x 0.8in (40.6cm x 25.3cm x 2cm) | 16.2in x 10.2in x 1.4in (41.2cm x 25.9cm x 3.5cm) |
| | or BP2-2AS stacking | 16in x 10in x 1.8in (40.6cm x 25.3cm x 4.6cm) | 16.2in x 10.2in x 2.4in (41.1cm x 25.9cm x 6cm) |
| | BP2-3A with | 16.4in x 10.4in x 2.6in (41.5cm x 26.4cm x 6.6cm) | 16.5in x 10.6in x 3.2in (41.9cm x 26.9cm x 8.2cm) |
| | BP2-2AS stacking | 16in x 10in x 1.8in (40.6cm x 25.3cm x 4.6cm) | 16.2in x 10.2in x 2.4in (41.1cm x 25.9cm x 6cm) |
| | or BP2-1AS stacking | 16in x 10in x 0.8in (40.6cm x 25.3cm x 2cm) | 16.2in x 10.2in x 1.4in (41.2cm x 25.9cm x 3.5cm) |
| | BP2-5A alone | 16.4in x 10.4in x 4.5in (41.5cm x 26.4cm x 11.4cm) | 16.5in x 10.6in x 5.1in (41.9cm x 26.9cm x 12.8cm) |
| | or with BP2-1AS stacking | 16in x 10in x 0.8in (40.6cm x 25.3cm x 2cm) | 16.2in x 10.2in x 1.4in (41.2cm x 25.9cm x 3.5cm) |
| | or BP2-2AS stacking | 16in x 10in x 1.8in (40.6cm x 25.3cm x 4.6cm) | 16.2in x 10.2in x 2.4in (41.1cm x 25.9cm x 6cm) |
| | Two BP2-2AS with | 16in x 10in x 1.8in (40.6cm x 25.3cm x 4.6cm) | 16.2in x 10.2in x 2.4in (41.1cm x 25.9cm x 6cm) |
| | BP2-2A in between | 16.4in x 10.4in x 1.9in (41.5cm x 26.4cm x 4.8cm) | 16.5in x 10.6in x 2.5in (41.9cm x 26.9cm x 6.4cm) |
| CD2-7* DL ^{NS} Deep lid, Mid length | BP2-3A alone | 16.4in x 10.4in x 2.6in (41.5cm x 26.4cm x 6.6cm) | 16.5in x 10.6in x 3.2in (41.9cm x 26.9cm x 8.2cm) |
| | or with BP2-2AS stacking | 16in x 10in x 1.8in (40.6cm x 25.3cm x 4.6cm) | 16.2in x 10.2in x 2.4in (41.1cm x 25.9cm x 6cm) |
| | or BP2-1AS stacking | 16in x 10in x 0.8in (40.6cm x 25.3cm x 2cm) | 16.2in x 10.2in x 1.4in (41.2cm x 25.9cm x 3.5cm) |
| | BP2-2A with | 16.4in x 10.4in x 1.9in (41.5cm x 26.4cm x 4.8cm) | 16.5in x 10.6in x 2.5in (41.9cm x 26.9cm x 6.4cm) |
| | BP2-2AS stacking | 16in x 10in x 1.8in (40.6cm x 25.3cm x 4.6cm) | 16.2in x 10.2in x 2.4in (41.1cm x 25.9cm x 6cm) |
| CD2-10* DL ^{NS} Deep lid, Mid length* | or BP2-1AS stacking | 16in x 10in x 0.8in (40.6cm x 25.3cm x 2cm) | 16.2in x 10.2in x 1.4in (41.2cm x 25.9cm x 3.5cm) |
| | BP2-6A alone | 16.4in x 10.4in x 5.4in (41.5cm x 26.4cm x 13.7cm) | 16.5in x 10.6in x 6in (41.9cm x 26.9cm x 15.2cm) |
| | or with BP2-2AS stacking | 16in x 10in x 1.8in (40.6cm x 25.3cm x 4.6cm) | 16.2in x 10.2in x 2.4in (41.1cm x 25.9cm x 6cm) |
| | or BP2-1AS stacking | 16in x 10in x 0.8in (40.6cm x 25.3cm x 2cm) | 16.2in x 10.2in x 1.4in (41.2cm x 25.9cm x 3.5cm) |
| | BP2-5A alone | 16.4in x 10.4in x 4.5in (41.5cm x 26.4cm x 11.4cm) | 16.5in x 10.6in x 5.1in (41.9cm x 26.9cm x 12.8cm) |
| | or with BP2-1AS stacking | 16in x 10in x 0.8in (40.6cm x 25.3cm x 2cm) | 16.2in x 10.2in x 1.4in (41.2cm x 25.9cm x 3.5cm) |
| | or BP2-2AS stacking | 16in x 10in x 1.8in (40.6cm x 25.3cm x 4.6cm) | 16.2in x 10.2in x 2.4in (41.1cm x 25.9cm x 6cm) |
| | Two BP2-2AS with | 16in x 10in x 1.8in (40.6cm x 25.3cm x 4.6cm) | 16.2in x 10.2in x 2.4in (41.1cm x 25.9cm x 6cm) |
| | BP2-2A in between | 16.4in x 10.4in x 1.9in (41.5cm x 26.4cm x 4.8cm) | 16.5in x 10.6in x 2.5in (41.9cm x 26.9cm x 6.4cm) |
| | BP2-4A with | 16.4in x 10.4in x 3.6in (41.5cm x 26.4cm x 9.1cm) | 16.5in x 10.6in x 4.2in (41.9cm x 26.9cm x 10.7cm) |
| | BP2-1AS stacking | 16in x 10in x 0.8in (40.6cm x 25.3cm x 2cm) | 16.2in x 10.2in x 1.4in (41.2cm x 25.9cm x 3.5cm) |
| | or BP2-2AS stacking | 16in x 10in x 1.8in (40.6cm x 25.3cm x 4.6cm) | 16.2in x 10.2in x 2.4in (41.1cm x 25.9cm x 6cm) |
| | BP2-3A with | 16.4in x 10.4in x 2.6in (41.5cm x 26.4cm x 6.6cm) | 16.5in x 10.6in x 3.2in (41.9cm x 26.9cm x 8.2cm) |
| BP2-2AS stacking | 16in x 10in x 1.8in (40.6cm x 25.3cm x 4.6cm) | 16.2in x 10.2in x 2.4in (41.1cm x 25.9cm x 6cm) | |
| CD3-4* Full length | BP3-2A | 20.3in x 10.4in x 1.8in (51.6cm x 26.4cm x 4.6cm) | 20.5in x 10.6in x 2.4in (52.1cm x 26.9cm x 6.2cm) |
| CD3-5* Full length | BP3-3A alone | 20.3in x 10.4in x 2.6in (51.6cm x 26.4cm x 6.6cm) | 20.5in x 10.6in x 3.2in (52.1cm x 26.9cm x 8.2cm) |
| | or with BP3-1AS stacking | 20in x 10in x 0.8in (50.8cm x 25.4cm x 2cm) | 20.2in x 10.2in x 1.4in (51.3cm x 25.9cm x 3.5cm) |
| | BP3-2A with | 20.3in x 10.4in x 1.8in (51.6cm x 26.4cm x 4.6cm) | 20.5in x 10.6in x 2.4in (52.1cm x 26.9cm x 6.2cm) |
| | BP3-2AS stacking | 20in x 10in x 1.8in (50.8cm x 25.4cm x 4.6cm) | 20.2in x 10.2in x 2.4in (51.3cm x 25.9cm x 6cm) |
| CD3-6* Full length | or BP3-1AS stacking | 20in x 10in x 0.8in (50.8cm x 25.4cm x 2cm) | 20.2in x 10.2in x 1.4in (51.3cm x 25.9cm x 3.5cm) |
| | BP3-4A alone | 20.3in x 10.4in x 3.6in (51.6cm x 26.4cm x 9.1cm) | 20.5in x 10.6in x 4.2in (52.1cm x 26.9cm x 10.7cm) |
| | or with BP3-1AS stacking | 20in x 10in x 0.8in (50.8cm x 25.4cm x 2cm) | 20.2in x 10.2in x 1.4in (51.3cm x 25.9cm x 3.5cm) |
| | BP3-3A with | 20.3in x 10.4in x 2.6in (51.6cm x 26.4cm x 6.6cm) | 20.5in x 10.6in x 3.2in (52.1cm x 26.9cm x 8.2cm) |
| | BP3-1AS stacking | 20in x 10in x 0.8in (50.8cm x 25.4cm x 2cm) | 20.2in x 10.2in x 1.4in (51.3cm x 25.9cm x 3.5cm) |
| | or BP3-2AS stacking | 20in x 10in x 1.8in (50.8cm x 25.4cm x 4.6cm) | 20.2in x 10.2in x 2.4in (51.3cm x 25.9cm x 6cm) |
| | BP3-2A with | 20.3in x 10.4in x 1.8in (51.6cm x 26.4cm x 4.6cm) | 20.5in x 10.6in x 2.4in (52.1cm x 26.9cm x 6.2cm) |
| | BP3-2AS stacking | 20in x 10in x 1.8in (50.8cm x 25.4cm x 4.6cm) | 20.2in x 10.2in x 2.4in (51.3cm x 25.9cm x 6cm) |
| CD3-7* Full length | or BP3-1AS stacking | 20in x 10in x 0.8in (50.8cm x 25.4cm x 2cm) | 20.2in x 10.2in x 1.4in (51.3cm x 25.9cm x 3.5cm) |
| | BP3-5A | 20.3in x 10.4in x 4.5in (51.6cm x 26.4cm x 11.4cm) | 20.5in x 10.6in x 5.1in (52.1cm x 26.9cm x 12.8cm) |
| | BP3-3A with | 20.3in x 10.4in x 2.6in (51.6cm x 26.4cm x 6.6cm) | 20.5in x 10.6in x 3.2in (52.1cm x 26.9cm x 8.2cm) |
| | BP3-1AS stacking | 20in x 10in x 0.8in (50.8cm x 25.4cm x 2cm) | 20.2in x 10.2in x 1.4in (51.3cm x 25.9cm x 3.5cm) |
| | or BP3-2AS stacking | 20in x 10in x 1.8in (50.8cm x 25.4cm x 4.6cm) | 20.2in x 10.2in x 2.4in (51.3cm x 25.9cm x 6cm) |
| | BP3-2A with | 20.3in x 10.4in x 1.8in (51.6cm x 26.4cm x 4.6cm) | 20.5in x 10.6in x 2.4in (52.1cm x 26.9cm x 6.2cm) |
| | BP3-2AS stacking | 20in x 10in x 1.8in (50.8cm x 25.4cm x 4.6cm) | 20.2in x 10.2in x 2.4in (51.3cm x 25.9cm x 6cm) |
| | BP3-4A alone | 20.3in x 10.4in x 3.6in (51.6cm x 26.4cm x 9.1cm) | 20.5in x 10.6in x 4.2in (52.1cm x 26.9cm x 10.7cm) |
| | or with BP3-1AS stacking | 20in x 10in x 0.8in (50.8cm x 25.4cm x 2cm) | 20.2in x 10.2in x 1.4in (51.3cm x 25.9cm x 3.5cm) |
| | or BP3-2A stacking | 20.3in x 10.4in x 1.8in (51.6cm x 26.4cm x 4.6cm) | 20.5in x 10.6in x 2.4in (52.1cm x 26.9cm x 6.2cm) |
| | Recommendations for laparoscopic instruments: | | |
| | BP3-3A with Lap Chole Insert SCS3142010 | 20.3in x 10.4in x 2.6in (51.6cm x 26.4cm x 6.6cm) | 20.5in x 10.6in x 3.2in (52.1cm x 26.9cm x 8.2cm) |
| | BP3-4A with Lap Chole Insert SCS3142010 | 20.3in x 10.4in x 3.6in (51.6cm x 26.4cm x 9.1cm) | 20.5in x 10.6in x 4.2in (52.1cm x 26.9cm x 10.7cm) |

Genesis® Sterilization Containers and Baskets

Basket Selection Guidelines (continued)

| Container | Basket | Basket Inside Dim. L x W x H | Basket Outside Dim. L x W x H | |
|--|--|--|--|--|
| CD3-8* DL Deep lid, Full length* | BP3-4A alone | 20.3in x 10.4in x 3.6in (51.6cm x 26.4cm x 9.1cm) | 20.5in x 10.6in x 4.2in (52.1cm x 26.9cm x 10.7cm) | |
| | or with BP3-1AS stacking | 20in x 10in x 0.8in (50.8cm x 25.4cm x 2cm) | 20.2in x 10.2in x 1.4in (51.3cm x 25.9cm x 3.5cm) | |
| | or BP3-2AS stacking | 20in x 10in x 1.8in (50.8cm x 25.4cm x 4.6cm) | 20.2in x 10.2in x 2.4in (51.3cm x 25.9cm x 6cm) | |
| | BP3-3A with | 20.3in x 10.4in x 2.6in (51.6cm x 26.4cm x 6.6cm) | 20.5in x 10.6in x 3.2in (52.1cm x 26.9cm x 8.2cm) | |
| | BP3-1AS stacking | 20in x 10in x 0.8in (50.8cm x 25.4cm x 2cm) | 20.2in x 10.2in x 1.4in (51.3cm x 25.9cm x 3.5cm) | |
| | or BP3-2AS stacking | 20in x 10in x 1.8in (50.8cm x 25.4cm x 4.6cm) | 20.2in x 10.2in x 2.4in (51.3cm x 25.9cm x 6cm) | |
| | BP3-2A with | 20.3in x 10.4in x 1.8in (51.6cm x 26.4cm x 4.6cm) | 20.5in x 10.6in x 2.4in (52.1cm x 26.9cm x 6.2cm) | |
| BP3-2AS stacking | 20in x 10in x 1.8in (50.8cm x 25.4cm x 4.6cm) | 20.2in x 10.2in x 2.4in (51.3cm x 25.9cm x 6cm) | | |
| CD3-9* DL ^{NS} Deep lid, Full length* | BP3-5A alone | 20.3in x 10.4in x 4.5in (51.6cm x 26.4cm x 11.4cm) | 20.5in x 10.6in x 5.1in (52.1cm x 26.9cm x 12.8cm) | |
| | or with BP3-1AS stacking | 20in x 10in x 0.8in (50.8cm x 25.4cm x 2cm) | 20.2in x 10.2in x 1.4in (51.3cm x 25.9cm x 3.5cm) | |
| | or BP3-2AS stacking | 20in x 10in x 1.8in (50.8cm x 25.4cm x 4.6cm) | 20.2in x 10.2in x 2.4in (51.3cm x 25.9cm x 6cm) | |
| | BP3-4A alone | 20.3in x 10.4in x 3.6in (51.6cm x 26.4cm x 9.1cm) | 20.5in x 10.6in x 4.2in (52.1cm x 26.9cm x 10.7cm) | |
| | or with BP3-1AS stacking | 20in x 10in x 0.8in (50.8cm x 25.4cm x 2cm) | 20.2in x 10.2in x 1.4in (51.3cm x 25.9cm x 3.5cm) | |
| | or BP3-2AS | 20in x 10in x 1.8in (50.8cm x 25.4cm x 4.6cm) | 20.2in x 10.2in x 2.4in (51.3cm x 25.9cm x 6cm) | |
| | BP3-3A with | 20.3in x 10.4in x 2.6in (51.6cm x 26.4cm x 6.6cm) | 20.5in x 10.6in x 3.2in (52.1cm x 26.9cm x 8.2cm) | |
| | BP3-1AS stacking | 20in x 10in x 0.8in (50.8cm x 25.4cm x 2cm) | 20.2in x 10.2in x 1.4in (51.3cm x 25.9cm x 3.5cm) | |
| | or BP3-2AS stacking | 20in x 10in x 1.8in (50.8cm x 25.4cm x 4.6cm) | 20.2in x 10.2in x 2.4in (51.3cm x 25.9cm x 6cm) | |
| | Recommendation for laparoscopic instruments: | | | |
| BP3-3A with Lap Chole Insert SCS3142010 resting on handles | 20.3in x 10.4in x 2.6in (51.6cm x 26.4cm x 6.6cm) | 20.5in x 10.6in x 3.2in (52.1cm x 26.9cm x 8.2cm) | | |
| CD4-3* Narrow short shallow | BP4-2A | 18in x 5.5in x 1.7in (45.7cm x 14cm x 4.3cm) 18.3in x 5.8in x 2.3in (46.4cm x 14.6cm x 5.9cm) | | |
| CD4-5* Narrow short | BP4-4A | 18in x 5.5in x 3.4in (45.7cm x 14cm x 8.6cm) | 18.3in x 5.8in x 4in (46.4cm x 14.6cm x 10.2cm) | |
| | BP4-2A | 18in x 5.5in x 1.7in (45.7cm x 14cm x 4.3cm) | 18.3in x 5.8in x 2.3in (46.4cm x 14.6cm x 5.9cm) | |
| | BP4-2AS stacking | 25.2in x 7.6in x 1.8in (64cm x 19.3cm x 4.6cm) | 25.4in x 7.8in x 2.4in (64.5cm x 19.7cm x 6cm) | |
| CD5-3* Narrow long shallow | BP5-2A | 25.5in x 7.9in x 2.1in (64.8cm x 20.1cm x 5.3cm) | 25.7in x 8.1in x 2.7in (65.2cm x 20.6cm x 6.9cm) | |
| CD5-61* Narrow long | BP5-4A | 25.5in x 7.9in x 3.6in (64.8cm x 20.1cm x 9.1cm) | 25.7in x 8.1in x 4.2in (65.2cm x 20.6cm x 10.7cm) | |
| | BP5-2A with | 25.5in x 7.9in x 2.1in (64.8cm x 20.1cm x 5.3cm) | 25.7in x 8.1in x 2.7in (65.2cm x 20.6cm x 6.9cm) | |
| | BP5-2AS stacking | 25.2in x 7.6in x 1.8in (64cm x 19.3cm x 4.6cm) | 25.4in x 7.8in x 2.4in (64.5cm x 19.7cm x 6cm) | |
| | Recommendation for long instruments (45cm): | | | |
| | BP5-3V for use only with Rack R-ALG00003 or R-ALG00004 | 18.2in x 8.1in x 2.7in (46.3cm x 20.6cm x 6.7cm) | 18.3in x 8.2in x 3.3in (46.4cm x 20.7cm x 8.3cm) | |
| CD6-6* ^{NS} Retractor | BP6-4A | 22.8in x 14.9in x 3.6in (57.9cm x 37.8cm x 9.1cm) | 23in x 15.1in x 4.2in (58.4cm x 38.4cm x 10.7cm) | |
| CD7-5* ^{NS} Extra long | BP7-3A alone | 22.3in x 10.4in x 2.6in (56.6cm x 26.4cm x 6.6cm) | 22.5in x 10.6in x 3.2in (57.2cm x 26.9cm x 8.1cm) | |
| CD7-6* ^{NS} Extra long | BP7-4A alone | 22.3in x 10.4in x 3.6in (56.6cm x 26.4cm x 9.1cm) | 22.5in x 10.6in x 4.2in (57.2cm x 26.9cm x 10.7cm) | |
| | BP7-3A alone | 22.3in x 10.4in x 2.6in (56.6cm x 26.4cm x 6.6cm) | 22.5in x 10.6in x 3.2in (57.2cm x 26.9cm x 8.1cm) | |
| | or with BP7-2AS stacking | 22.1in x 10in x 1.8in (56.1cm x 25.4cm x 4.6cm) | 22.3in x 10.2in x 2.4in (56.5cm x 25.9cm x 6.1cm) | |
| CD7-9* ^{NS} Extra long | BP7-4A alone | 22.3in x 10.4in x 3.6in (56.6cm x 26.4cm x 9.1cm) | 22.5in x 10.6in x 4.2in (57.2cm x 26.9cm x 10.7cm) | |
| | or BP7-2AS stacking | 22.1in x 10in x 1.8in (56.1cm x 25.4cm x 4.6cm) | 22.3in x 10.2in x 2.4in (56.5cm x 25.9cm x 6.1cm) | |
| | or BP7-4AS stacking | 22.1in x 10in x 3.4in (56.1cm x 25.4cm x 8.6cm) | 22.3in x 10.2in x 4in (56.5cm x 25.9cm x 10.2cm) | |
| | BP7-3A alone | 22.3in x 10.4in x 2.6in (56.6cm x 26.4cm x 6.6cm) | 22.5in x 10.6in x 3.2in (57.2cm x 26.9cm x 8.1cm) | |
| | or with BP7-4AS | 22.1in x 10in x 3.4in (56.1cm x 25.4cm x 8.6cm) | 22.3in x 10.2in x 4in (56.5cm x 25.9cm x 10.2cm) | |

*Order numbers should add a B suffix for perforated bottom containers, a C suffix for solid bottom containers or a ST suffix for STERRAD system compatible containers (not available on deep lid and extra-long containers).

^{NS}Not available in STERRAD system compatible version (deep lid and extra-long containers).

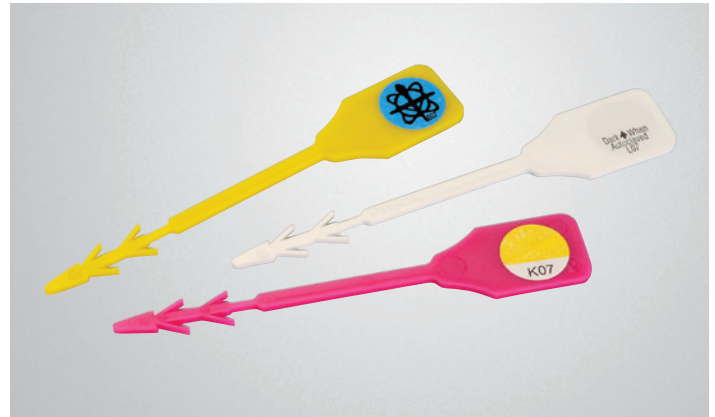
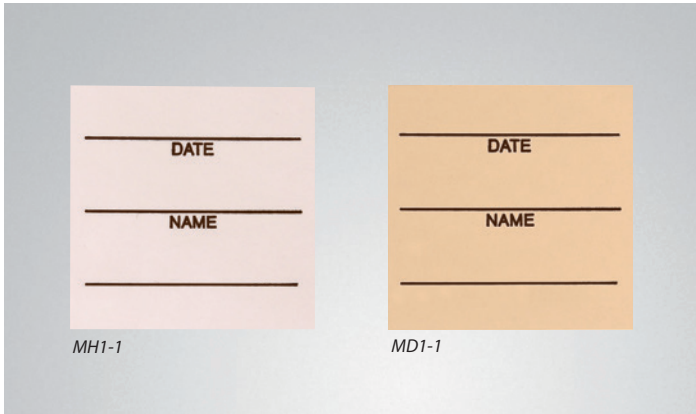
Basket Selection Guidelines (continued)

| Container | Basket | Basket Inside Dim. L x W x H | Basket Outside Dim. L x W x H |
|-----------------------|---------------------|---|--|
| DINCD1-5* Half length | DINBP1-3A alone | 8.8in x 9.4in x 2.6in, 22.4cm x 23.9cm x 6.6cm | 9in x 9.6in x 3.2in, 22.9cm x 24.4cm x 8.2cm |
| | DINBP1-2A with | 8.8in x 9.4in x 1.8in, 22.4cm x 23.9cm x 4.6cm | 9in x 9.6in x 2.4in, 22.9cm x 24.4cm x 6.2cm |
| | DINBP1-2AS stacking | 8.5in x 9in x 1.8in, 21.6cm x 22.9cm x 4.6cm | 8.7in x 9.2in x 2.4in, 22.1cm x 23.4cm x 6.1cm |
| DINCD1-6* Half length | DINBP1-4A alone | 8.8in x 9.4in x 3.6in, 22.4cm x 23.9cm x 9.1cm | 9in x 9.6in x 4.2in, 22.9cm x 24.4cm x 10.7cm |
| | DINBP1-3A with | 8.8in x 9.4in x 2.6in, 22.4cm x 23.9cm x 6.6cm | 9in x 9.6in x 3.2in, 22.9cm x 24.4cm x 8.2cm |
| | DINBP1-2AS stacking | 8.5in x 9in x 1.8in, 21.6cm x 22.9cm x 4.6cm | 8.7in x 9.2in x 2.4in, 22.1cm x 23.4cm x 6.1cm |
| | DINBP1-2A with | 8.8in x 9.4in x 1.8in, 22.4cm x 23.9cm x 4.6cm | 9in x 9.6in x 2.4in, 22.9cm x 24.4cm x 6.2cm |
| | DINBP1-2AS stacking | 8.5in x 9in x 1.8in, 21.6cm x 22.9cm x 4.6cm | 8.7in x 9.2in x 2.4in, 22.1cm x 23.4cm x 6.1cm |
| DINCD2-5* Mid length | DINBP2-3A alone | 16.3in x 9.4in x 2.6in, 41.4cm x 23.9cm x 6.6cm | 16.5in x 9.6in x 3.2in, 41.9cm x 24.4cm x 8.1cm |
| | DINBP2-2A with | 16.3in x 9.4in x 1.8in, 41.4cm x 23.9cm x 4.6cm | 16.5in x 9.6in x 2.4in, 41.9cm x 24.4cm x 6.1cm |
| | DINBP2-2AS stacking | 16in x 9in x 1.8in, 40.6cm x 22.9cm x 4.6cm | 16.2in x 9.2in x 2.4in, 41.1cm x 23.4cm x 6.1cm |
| DINCD2-6* Mid length | DINBP2-4A alone | 16.3in x 9.4in x 3.6in, 41.4cm x 23.9cm x 9.1cm | 16.5in x 9.6in x 4.2in, 41.9cm x 24.4cm x 10.7cm |
| | DINBP2-3A with | 16.3in x 9.4in x 2.6in, 41.4cm x 23.9cm x 6.6cm | 16.5in x 9.6in x 3.2in, 41.9cm x 24.4cm x 8.1cm |
| | DINBP2-2AS stacking | 16in x 9in x 1.8in, 40.6cm x 22.9cm x 4.6cm | 16.2in x 9.2in x 2.4in, 41.1cm x 23.4cm x 6.1cm |
| | DINBP2-2A with | 16.3in x 9.4in x 1.8in, 41.4cm x 23.9cm x 4.6cm | 16.5in x 9.6in x 2.4in, 41.9cm x 24.4cm x 6.1cm |
| | DINBP2-2AS stacking | 16in x 9in x 1.8in, 40.6cm x 22.9cm x 4.6cm | 16.2in x 9.2in x 2.4in, 41.1cm x 23.4cm x 6.1cm |
| DINCD2-8* Mid length | DINBP2-4A with | 16.3in x 9.4in x 3.6in, 41.4cm x 23.9cm x 9.1cm | 16.5in x 9.6in x 4.2in, 41.9cm x 24.4cm x 10.7cm |
| | DINBP2-2AS stacking | 16in x 9in x 1.8in, 40.6cm x 22.9cm x 4.6cm | 16.2in x 9.2in x 2.4in, 41.1cm x 23.4cm x 6.1cm |
| | DINBP2-3A with | 16.3in x 9.4in x 2.6in, 41.4cm x 23.9cm x 6.6cm | 16.5in x 9.6in x 3.2in, 41.9cm x 24.4cm x 8.1cm |
| | DINBP2-2AS stacking | 16in x 9in x 1.8in, 40.6cm x 22.9cm x 4.6cm | 16.2in x 9.2in x 2.4in, 41.1cm x 23.4cm x 6.1cm |
| | DINBP2-2A with | 16.3in x 9.4in x 1.8in, 41.4cm x 23.9cm x 4.6cm | 16.5in x 9.6in x 2.4in, 41.9cm x 24.4cm x 6.1cm |
| DINCD3-5* Full length | DINBP3-3A alone | 20.3in x 9.4in x 2.6in, 51.6cm x 23.9cm x 6.6cm | 20.5in x 9.6in x 3.2in, 52.1cm x 24.4cm x 8.1cm |
| | DINBP3-2A with | 20.3in x 9.4in x 1.8in, 51.6cm x 23.9cm x 4.6cm | 20.5in x 9.6in x 2.4in, 52.1cm x 24.4cm x 6.1cm |
| DINCD3-6* Full length | DINBP3-2AS stacking | 20in x 9in x 1.8in, 50.8cm x 22.9cm x 4.6cm | 20.2in x 9.2in x 2.4in, 51.3cm x 23.4cm x 6.1cm |
| | DINBP3-4A alone | 20.3in x 9.4in x 3.6in, 51.6cm x 23.9cm x 9.1cm | 20.5in x 9.6in x 4.2in, 52.1cm x 24.4cm x 10.7cm |
| | DINBP3-3A with | 20.3in x 9.4in x 2.6in, 51.6cm x 23.9cm x 6.6cm | 20.5in x 9.6in x 3.2in, 52.1cm x 24.4cm x 8.1cm |
| | DINBP3-2AS stacking | 20in x 9in x 1.8in, 50.8cm x 22.9cm x 4.6cm | 20.2in x 9.2in x 2.4in, 51.3cm x 23.4cm x 6.1cm |
| | DINBP3-2A with | 20.3in x 9.4in x 1.8in, 51.6cm x 23.9cm x 4.6cm | 20.5in x 9.6in x 2.4in, 52.1cm x 24.4cm x 6.1cm |
| DINCD3-7* Full length | DINBP3-2AS stacking | 20in x 9in x 1.8in, 50.8cm x 22.9cm x 4.6cm | 20.2in x 9.2in x 2.4in, 51.3cm x 23.4cm x 6.1cm |
| | DINBP3-4A with | 20.3in x 9.4in x 3.6in, 51.6cm x 23.9cm x 9.1cm | 20.5in x 9.6in x 4.2in, 52.1cm x 24.4cm x 10.7cm |
| | DINBP3-2AS stacking | 20in x 9in x 1.8in, 50.8cm x 22.9cm x 4.6cm | 20.2in x 9.2in x 2.4in, 51.3cm x 23.4cm x 6.1cm |
| | DINBP3-3A with | 20.3in x 9.4in x 2.6in, 51.6cm x 23.9cm x 6.6cm | 20.5in x 9.6in x 3.2in, 52.1cm x 24.4cm x 8.1cm |
| | DINBP3-2AS stacking | 20in x 9in x 1.8in, 50.8cm x 22.9cm x 4.6cm | 20.2in x 9.2in x 2.4in, 51.3cm x 23.4cm x 6.1cm |
| DINCD3-7* Full length | DINBP3-2A with | 20.3in x 9.4in x 1.8in, 51.6cm x 23.9cm x 4.6cm | 20.5in x 9.6in x 2.4in, 52.1cm x 24.4cm x 6.1cm |
| | DINBP3-2AS stacking | 20in x 9in x 1.8in, 50.8cm x 22.9cm x 4.6cm | 20.2in x 9.2in x 2.4in, 51.3cm x 23.4cm x 6.1cm |

*Order numbers should add a B suffix for perforated bottom containers, a C suffix for solid bottom containers or a ST suffix for STERRAD system compatible containers (not available on deep lid and extra-long containers).

¹⁵Not available in STERRAD system compatible version (deep lid and extra-long containers).

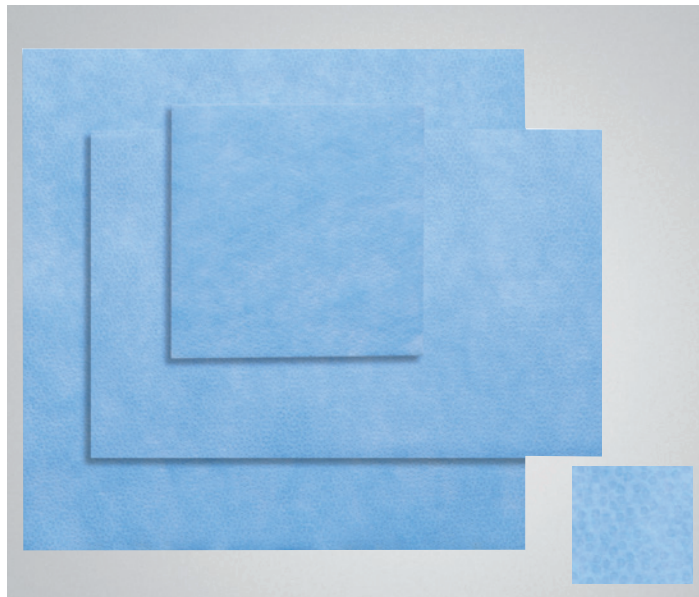
Genesis® Sterilization Container Accessories



Genesis Data Cards

500 per box.

| Cat. No. | Description |
|----------|--|
| MD1-1 | Paper data card. For use in steam or EO sterilization. |
| MH1-1 | Non-cellulose. For use in STERRAD sterilization systems. |



Genesis Filter Paper

For use in steam, EO sterilization, and STERRAD systems.

| Cat. No. | Size | Qty/Box |
|----------|--|---------|
| DST-1 | 4-1/2in x 4-1/2in (11.4cm x 11.4cm) | 500 |
| DST-2 | 9in x 6in (23cm x 15.2cm) | 500 |
| DST-3 | 9.5in x 9.5in (24cm x 24.1cm) | 1000 |

Tamper-Evident Arrows

Double-barbed.

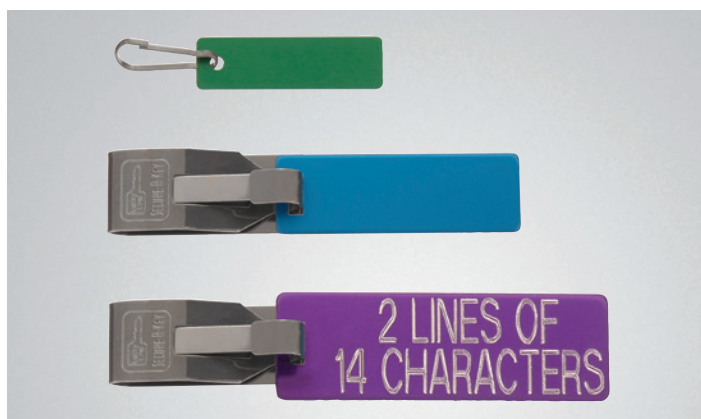
| Cat. No. | Description | Qty/Box |
|----------|--|---------|
| AG2-1 | Gas (EO). Yellow. | 150 |
| AG2-2 | Gas (EO). Yellow. | 500 |
| AS2-2 | Steam. White. | 500 |
| AS2-3 | Steam. White. | 1,000 |
| AH2-1 | STERRAD container compatible. Fuchsia. | 150 |



Genesis Container ID Tags

14 characters per line, 2 lines per tag, up to 4 tags per container (2 tags on each end).

| Cat. No. | Color |
|----------|---------|
| TC2-1 | Black |
| TC2-2 | Blue |
| TC2-3 | Brown |
| TC2-4 | Gold |
| TC2-5 | Green |
| TC2-6 | Red |
| TC2-7 | Silver |
| TC2-8 | Orange |
| TC2-9 | Purple |
| TC2-12 | Fuchsia |



Genesis Basket ID Tags

Available in three sizes: standard, large and extra-large.

Each tag can hold 14 characters per line, 2 lines per tag.

Standard – .5in x 1.75in (1.3cm x 4.4cm). Large – .75in x 2.25in (1.9cm x 5.7cm). Extra-large – 1in x 3in (2.54cm x 7.6cm).

| Cat. No. | Description | Color |
|----------|-------------|---------------|
| TB1-1 | Standard | Black |
| TB1-2 | Standard | Blue |
| TB1-3 | Standard | Brown |
| TB1-4 | Standard | Gold |
| TB1-5 | Standard | Green |
| TB1-6 | Standard | Red |
| TB1-7 | Standard | Silver |
| TB1-10 | Standard | Midnight blue |
| TB1-12 | Standard | Fuchsia |
| TB2-1 | Large | Black |
| TB2-2 | Large | Blue |
| TB2-3 | Large | Brown |
| TB2-4 | Large | Gold |
| TB2-5 | Large | Green |
| TB2-6 | Large | Red |
| TB2-7 | Large | Silver |
| TB2-10 | Large | Midnight blue |
| TB2-12 | Large | Fuchsia |
| TB3-1 | Extra-large | Black |
| TB3-3 | Extra-large | Brown |
| TB3-4 | Extra-large | Gold |
| TB3-5 | Extra-large | Green |
| TB3-6 | Extra-large | Red |
| TB3-7 | Extra-large | Silver |
| TB3-8 | Extra-large | Orange |
| TB3-9 | Extra-large | Purple |
| TB3-10 | Extra-large | Midnight blue |
| TB3-12 | Extra-large | Fuchsia |

Genesis® Sterilization Container Accessories

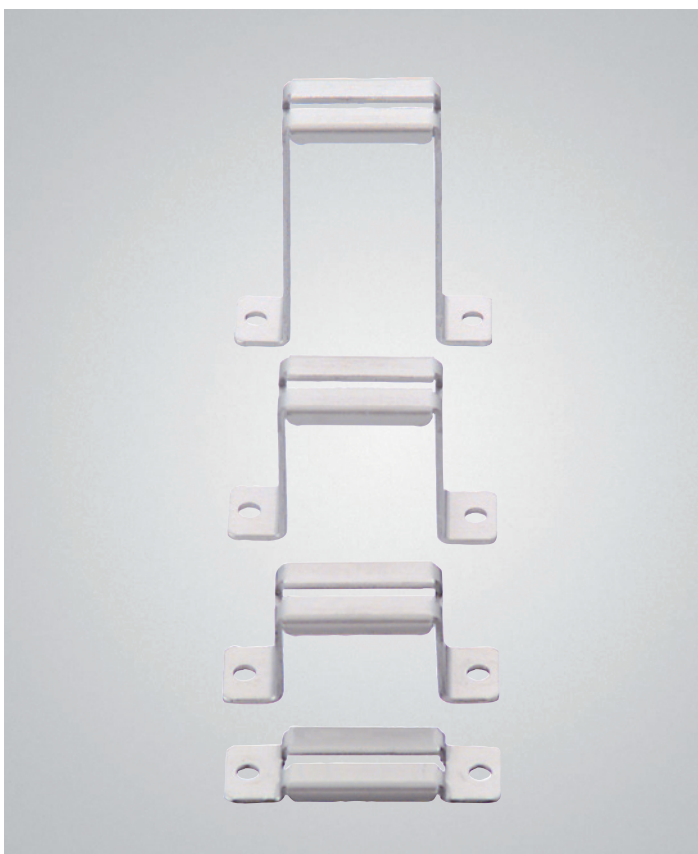
Aluminum Brackets

Aluminum brackets are available in three lengths and four heights for installation inside Genesis baskets. We also offer aluminum brackets in three lengths that mount onto the sides of Genesis baskets.

An assortment of silicone bars provides countless configurations for your instruments.



Aluminum bracket with silicone bar



1.5in (3.8cm) Long Aluminum Brackets

For use with 1.5in (3.8cm) long silicone bars. Available in pairs.

| Cat. No. | Height |
|-----------|----------------|
| GR1892-1 | 0.17in (0.4cm) |
| GR1892-4 | 1.0in (2.5cm) |
| GR1892-7 | 1.6in (4.1cm) |
| GR1892-10 | 2.6in (6.6cm) |



3.0in (7.6cm) Long Aluminum Brackets

For use with 3.0in (7.6cm) long silicone bars. Available in pairs.

| Cat. No. | Height |
|-----------|----------------|
| GR1892-2 | 0.17in (0.4cm) |
| GR1892-5 | 1.0in (2.5cm) |
| GR1892-8 | 1.6in (4.1cm) |
| GR1892-11 | 2.6in (6.6cm) |

7.0in (17.8cm) Long Aluminum Brackets

For use with 7in (17.8cm) long silicone bars.
Available in pairs.

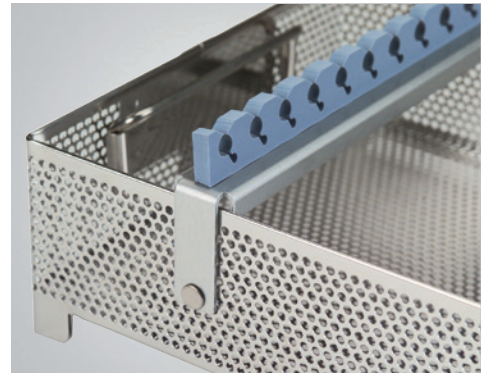
| Cat. No. | Height |
|-----------|----------------|
| GR1892-3 | 0.17in (0.4cm) |
| GR1892-6 | 1.0in (2.5cm) |
| GR1892-9 | 1.6in (4.1cm) |
| GR1892-12 | 2.6in (6.6cm) |



2.0in (5.1cm) High Side-Mount Aluminum Brackets

Available in pairs.

| Cat. No. | Length |
|----------|-----------------|
| GR1893-2 | 8.0in (20.3cm) |
| GR1893-1 | 10.5in (26.7cm) |
| GR1893-3 | 15.0in (38.1cm) |



Side-mounting aluminum bracket with silicone bar



Genesis® Sterilization Container Accessories

Silicone Bars

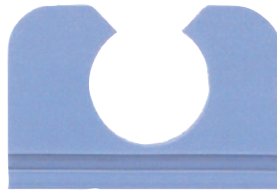
Silicone bars slide easily into aluminum brackets. The bars come in a variety of lengths and cut-out configurations designed to suit your surgical instruments, so there is always a perfect fit.

1.5in (3.8cm) Long Silicone Bars

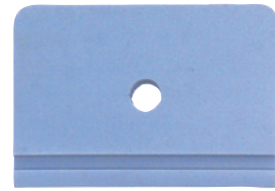
For use with 1.5in (3.8cm) long aluminum brackets. Available one each. **Shown actual size.**



| Cat. No. | Description |
|----------|-------------------------------|
| GR5353 | Open end 12mm opening size |



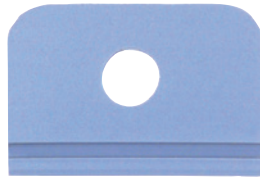
| Cat. No. | Description |
|----------|-------------------------------|
| GR5350 | Open end 15mm opening size |



| Cat. No. | Description |
|----------|--------------------------------|
| GR5355 | Closed end 4mm opening size |



| Cat. No. | Description |
|----------|--------------------------------|
| GR5354 | Closed end 6mm opening size |



| Cat. No. | Description |
|----------|--------------------------------|
| GR5351 | Closed end 8mm opening size |



| Cat. No. | Description |
|----------|---------------------------------|
| GR5352 | Closed end 12mm opening size |

3.0in (7.6cm) Long Silicone Bars

For use with 3.0in (7.6cm) long aluminum brackets. Available one each. **Shown actual size.**



| Cat. No. | Description |
|----------|-------------|
| GR5311 | Solid |



| Cat. No. | Description |
|----------|-------------|
| GR5312 | 4 slot |

3.0in (7.6cm) Long Silicone Bars (continued)

Shown actual size.



| Cat. No. | Description |
|----------|--|
| GR5330 | Star pattern, 3 holes 3mm to 8mm opening size |



| Cat. No. | Description |
|----------|---|
| GR5331 | Star pattern, 3 holes 8mm to 15mm opening size |



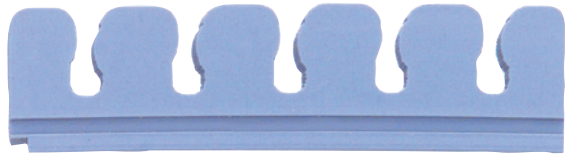
| Cat. No. | Description |
|----------|---|
| GR5332 | Dual size, 3 holes 5mm and 10mm opening size |



| Cat. No. | Description |
|----------|----------------------------|
| GR5320 | 3 slot 5mm opening size |



| Cat. No. | Description |
|----------|----------------------------|
| GR5335 | 5 slot 3mm opening size |



| Cat. No. | Description |
|----------|----------------------------|
| GR5333 | 5 slot 5mm opening size |



| Cat. No. | Description |
|----------|-----------------------------|
| GR5334 | 3 slot 10mm opening size |



| Cat. No. | Description |
|----------|------------------------------------|
| GR5339 | Camera holder 30mm opening size |



| Cat. No. | Description |
|----------|---|
| GR5340 | Scope holder, double end 8mm and 15mm opening size |



| Cat. No. | Description |
|----------|---|
| GR5341 | Scope holder, double end 12mm opening size |

Genesis® Sterilization Container Accessories

7.0in (17.8cm) Long Silicone Bars

For use with 7.0in (17.8cm) long aluminum brackets. Available one each.



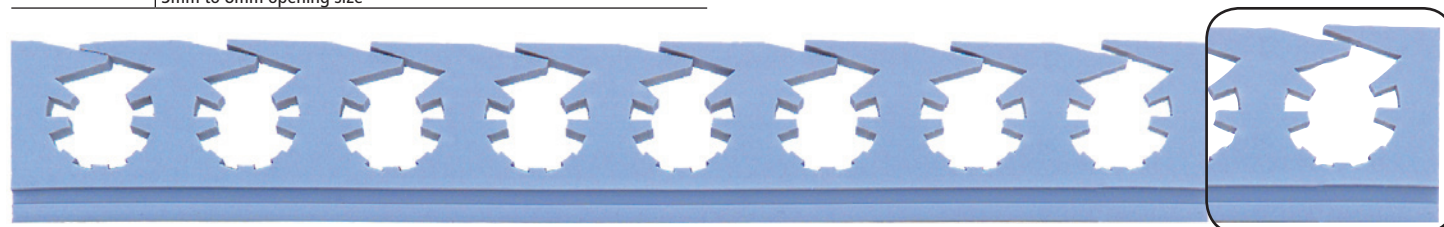
| Cat. No. | Description |
|----------|-------------|
| GR5310 | Solid |

Shown actual size



| Cat. No. | Description |
|----------|---|
| GR5370 | Star pattern, 10 holes 3mm to 8mm opening size |

Shown actual size



| Cat. No. | Description |
|----------|---|
| GR5371 | Star pattern, 8 holes 8mm to 15mm opening size |

Shown actual size



| Cat. No. | Description |
|----------|--|
| GR5372 | Dual size, 9 holes 5mm to 10mm opening size |

Shown actual size



| Cat. No. | Description |
|----------|----------------------------|
| GR5300 | 6 slot 3mm opening size |

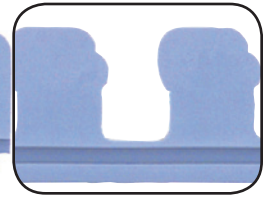
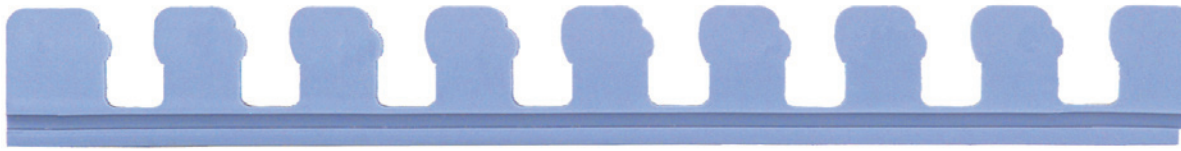
Shown actual size



| Cat. No. | Description |
|----------|----------------------------|
| GR5301 | 6 slot 6mm opening size |

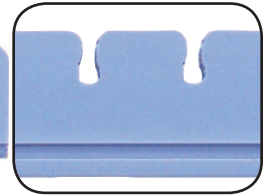
Shown actual size

7.0in (17.8cm) Long Silicone Bars (continued)



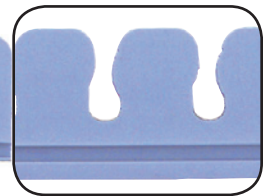
Shown actual size

| Cat. No. | Description |
|----------|-----------------------------|
| GR5374 | 8 slot 10mm opening size |



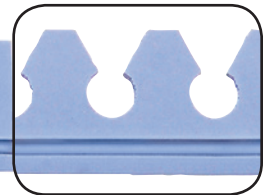
Shown actual size

| Cat. No. | Description |
|----------|-----------------------------|
| GR5375 | 12 slot 3mm opening size |



Shown actual size

| Cat. No. | Description |
|----------|-----------------------------|
| GR5373 | 12 slot 5mm opening size |



Shown actual size

| Cat. No. | Description |
|----------|-----------------------------|
| GR5302 | 12 slot 6mm opening size |

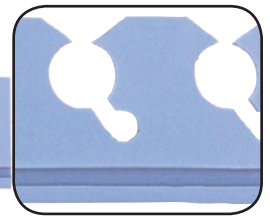
10.5in (26.7cm) Long Silicone Bars

For use with 10.5in (26.7cm) long Aluminum Bracket (GR1893-1). Available in pairs.



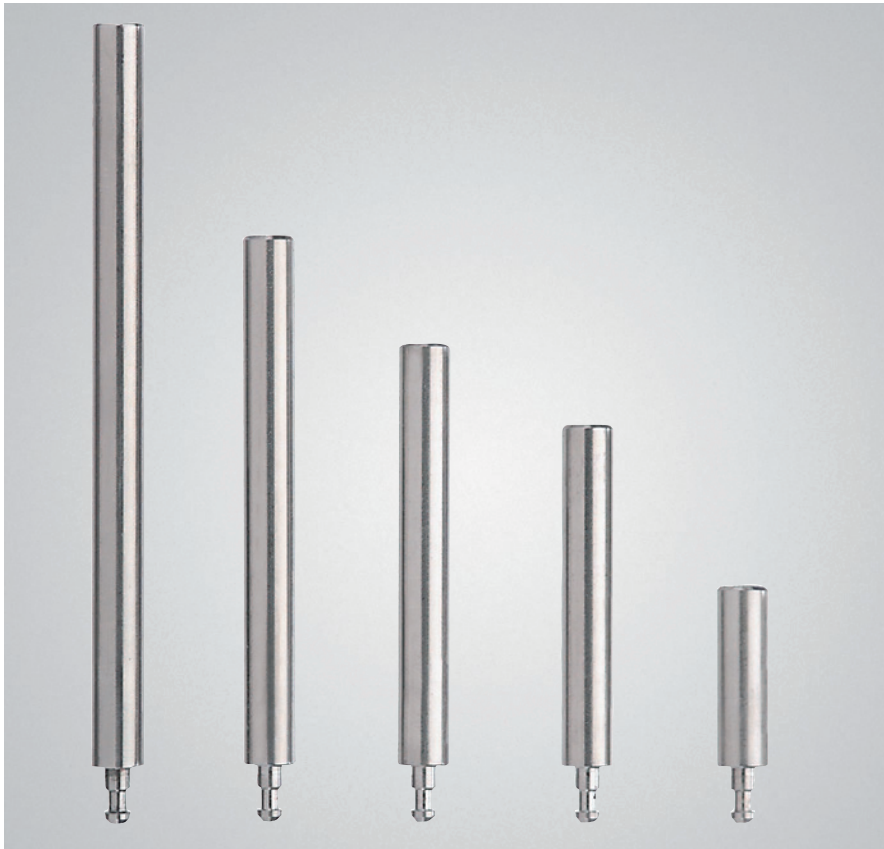
Shown actual size

| Cat. No. | Description |
|------------|--|
| GR33322338 | Dual size, 16 holes 5mm and 10mm opening size |



Shown actual size

| Cat. No. | Description |
|------------|--|
| GR33322561 | Dual size, 14 holes 5mm and 10mm opening size |



Pins are available in lengths from 1.0in (2.5cm) to 3.5in (8.9cm)

Quick-Disconnect Posts, Pins and Clip

Five pin sizes for holding ring-handled instruments can be easily secured in place using the quick-disconnect clip (see Installation Instructions on page 20). The quick-disconnect clip can easily be removed for reconfiguration within the container. **12 posts, pins or clips per bag.**

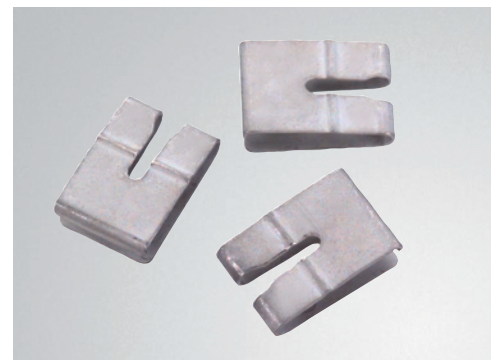
| Cat. No. | Description | Size |
|----------|-------------|---------------|
| GR1808-8 | Pin | 1.0in (2.5cm) |
| GR1808-4 | Pin | 1.6in (4.1cm) |
| GR1808-5 | Pin | 2.0in (5.1cm) |
| GR1808-6 | Pin | 2.5in (6.4cm) |
| GR1808-7 | Pin | 3.5in (8.9cm) |
| GR1808-1 | Post | Low profile |
| GR1808-3 | Post | High profile |
| GR1807 | Clip | |



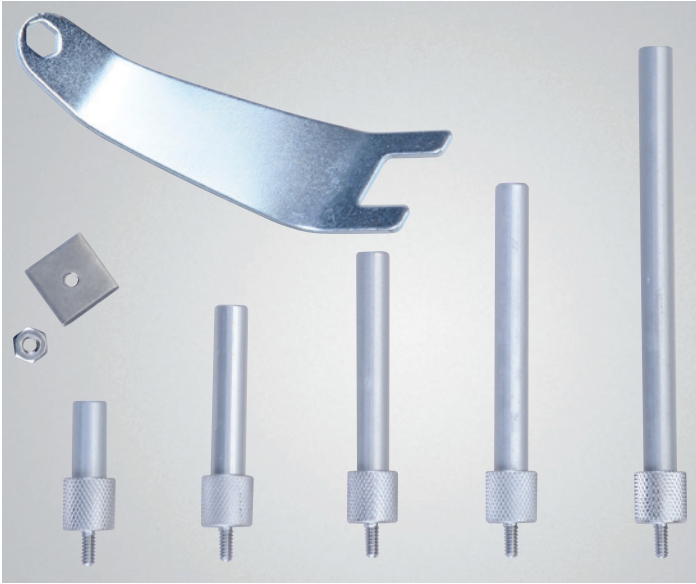
Posts GR1808-1 for installing aluminium brackets and dividers in perforated baskets



Posts GR1808-3 for installing aluminum brackets and dividers in perforated baskets



Quick-Disconnect Clips GR1807



Instrument Pins

For Genesis baskets.

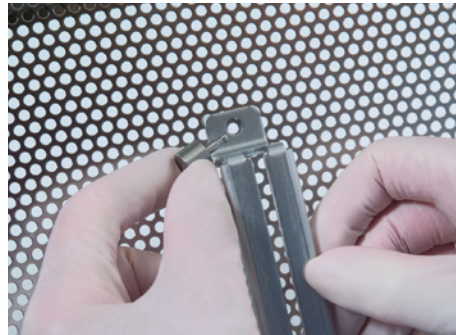
| Cat. No. | Height |
|----------|------------------|
| PP1-1 | 1in (2.5cm) |
| PP1-2 | 1.5in (3.8cm) |
| PP1-2.5 | 2in (5.1cm) |
| PP1-3 | 2.5in (6.3cm) |
| PP1-4 | 3.5in (8.9cm) |

Installation Instructions

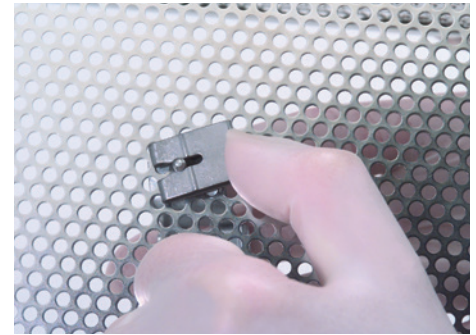
All Genesis accessories are designed to protect your valuable instruments while allowing for effective sterilization. To use Genesis accessories with your existing Genesis container system, simply follow these steps.



1. Select the desired posts or pins, aluminum brackets and silicone bars needed to properly accommodate the instruments being sterilized.



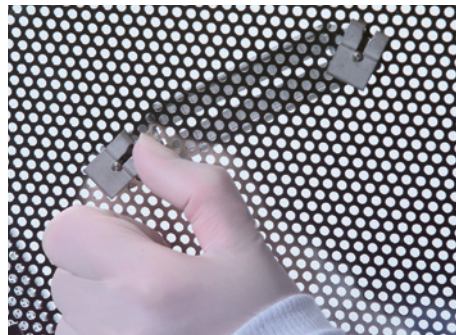
2. Insert a post through the hole on either end of the bracket and position in the Genesis basket at the desired location.



3. Holding the post in place, turn the basket over and position the quick-disconnect clip over the tip of the post. Slide the clip until the post is locked securely in place. (Repeat steps 2 and 3 on the other end of the bracket.)



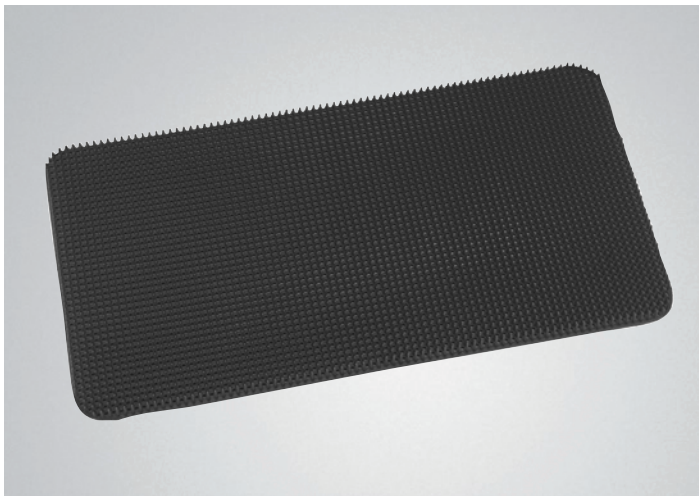
4. Slide a silicone bar into the bracket.*



5. To release, apply pressure while sliding the quick-disconnect clip away from the post.

*Instrument lubricant may be used to lubricate the aluminum bracket for easy installation of the silicone bar.

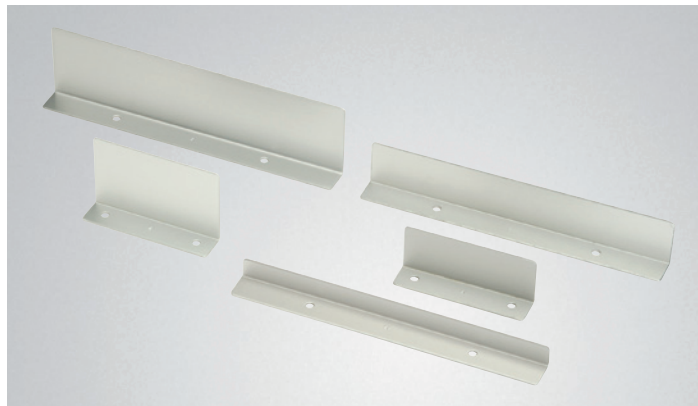
Genesis® Sterilization Container Accessories



Mats

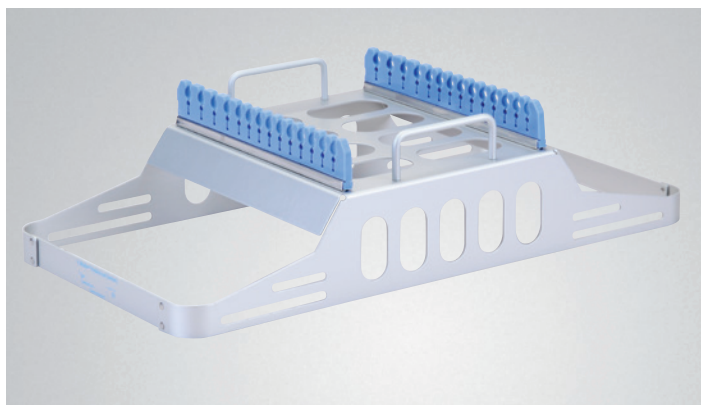
Soft, spiked, perforated, rounded corners.

| Cat. No. | Size |
|----------|--|
| SX2972-1 | 6-3/4in x 10-3/4in (17.2cm x 27.3cm) Quarter-length basket size |
| SX2972-3 | 9in x 10in (22.9cm x 25.4cm) Half-length basket size |
| SX2972-4 | 10in x 16in (25.4cm x 40.6cm) Mid-length basket size |
| SX2972-5 | 10in x 20in (25.4cm x 50.8cm) Full-length basket size |
| SX2972-6 | 15in x 23in (38.1cm x 58.4cm) Retractor-length basket size |



Dividers

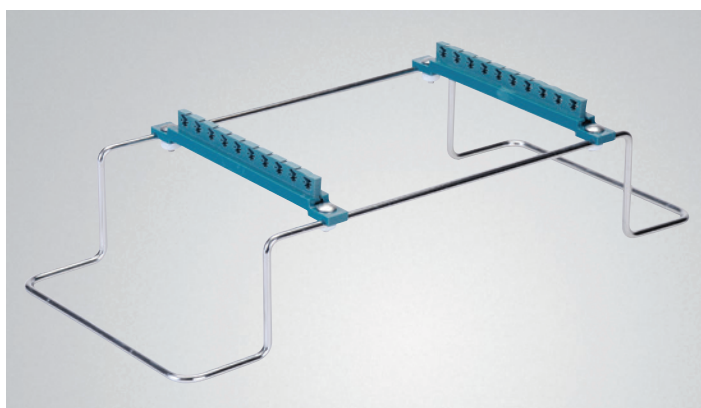
| Cat. No. | Size |
|----------|------------------------------------|
| DP1-4 | 4.25in x 1.5in (10.8cm x 3.8cm) |
| DP1-2 | 4.25in x 2.5in (10.8cm x 6.3cm) |
| DP1-5 | 10in x .75in (25.4cm x 1.9cm) |
| DP1-3 | 10in x 1.5in (25.4cm x 3.8cm) |
| DP1-1 | 10in x 2.5in (25.4cm x 6.3cm) |



Laparoscopic Tray Insert

For use in Genesis Full-Length Standard Containers CD3-7B and CD3-7C. Includes 2.5mm to 10mm silicone holders. Height 4.75in (119mm).

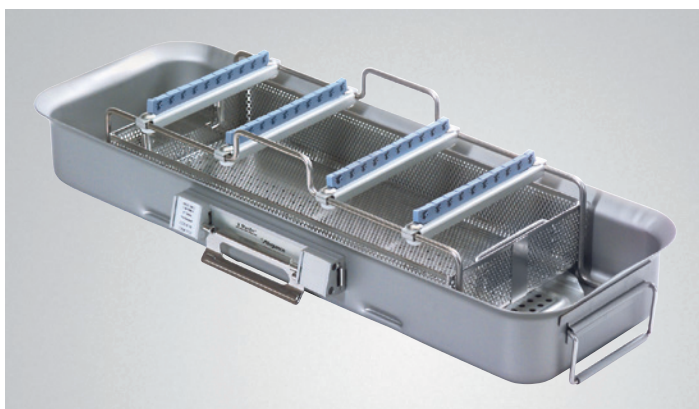
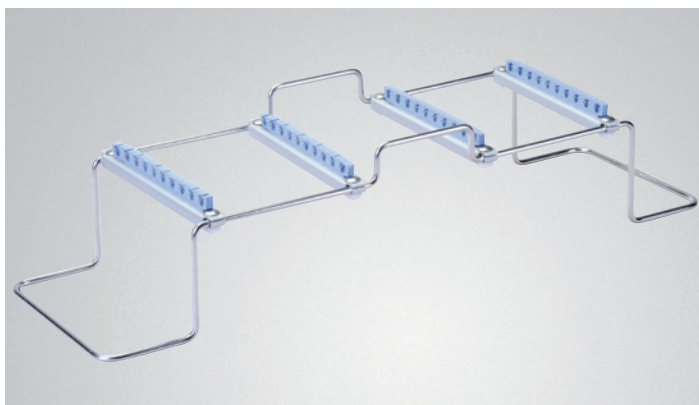
| Cat. No. | Description |
|------------|-----------------------|
| SCS3142010 | Holds 14 instruments. |



Laparoscopic Racks

For use in Genesis Full-Length Standard Containers CD3-6B, CD3-6C, CD3-7B and CD3-7C.

| Cat. No. | Description |
|------------|--|
| R-ALG00001 | With 3mm and 8mm silicone holders. Holds 10 instruments. |
| R-ALG00002 | With 5mm and 10mm silicone holders. Holds 9 instruments. |



Genesis Large Narrow Container CD5-61, Laparoscopic Rack R-ALG00003 and Basket BP5-3V

Laparoscopic Racks and Basket

For use in Genesis Large Narrow Containers CD5-61B and CD5-61C.

| Cat. No. | Description |
|------------|---|
| R-ALG00003 | With 3mm and 8mm silicone holders. Holds 10 instruments. |
| R-ALG00004 | With 5mm and 10mm silicone holders. Holds 10 instruments. |
| BP5-3V | Basket for laparoscopic rack |

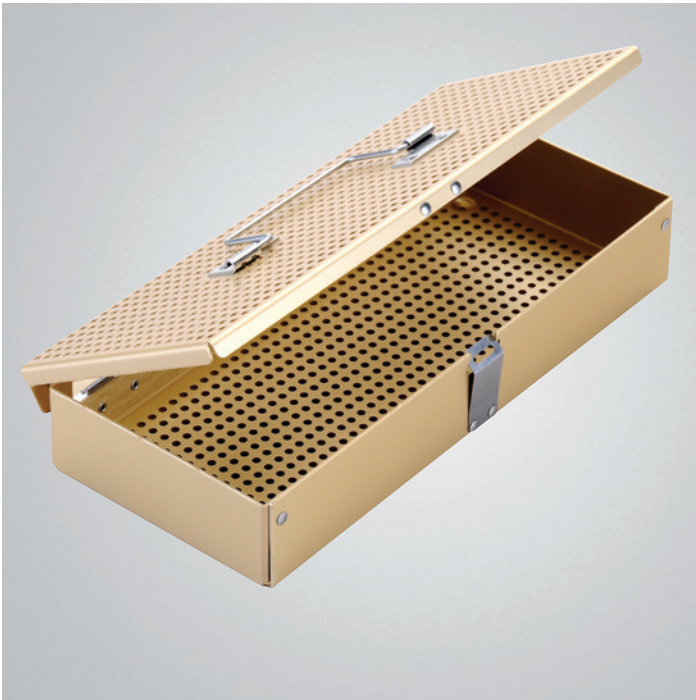
Sterilization Cases, Trays and Accessories



Lap Chole Instrument Cases

Laparoscopic insert with case.

| Cat. No. | Dimensions |
|----------|---|
| SCS51523 | 11in x 23in x 8in (27.9cm x 58.4cm x 20.3cm) |



Metal Scope Case

With detachable lid.

| Cat. No. | Dimensions |
|----------|--|
| SCS30011 | 5in x 10.5in x 2in (7.6cm x 26.7cm x 5.1cm) |

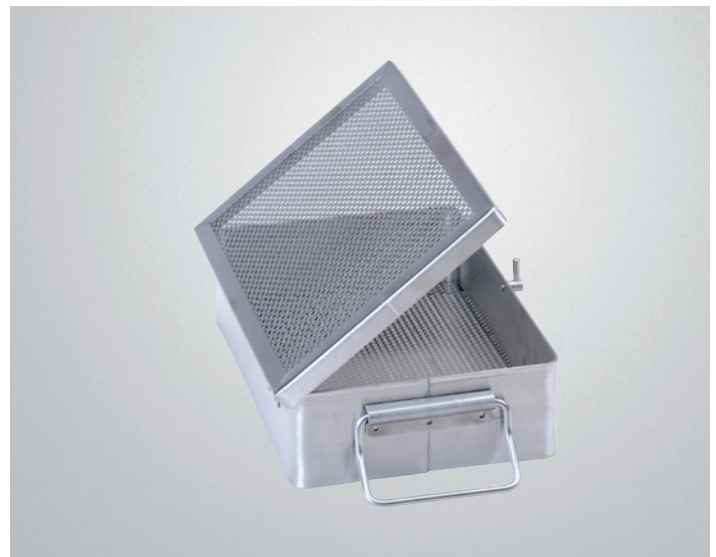
Cleaning and sterilizing trays are made of sturdy stainless steel in a full range of useful sizes – which fit standard autoclaves and ultrasonic cleaners for maximum convenience. Available in both open and lidded types.



Sterilization Trays

Unlidded trays for wrapped instruments.

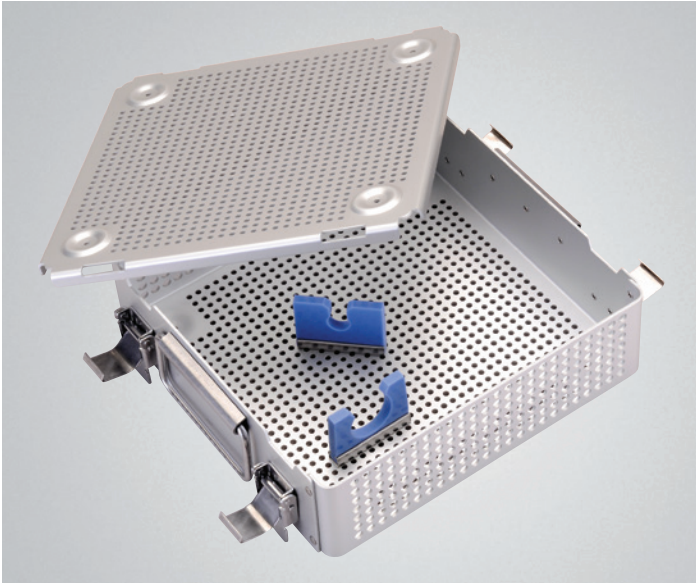
| Cat. No. | Dimensions |
|------------|--|
| SU2987-002 | 6-1/2in x 10in x 2-1/2in (16.5cm x 25.4cm x 6.3cm) |
| SU2987-004 | 10in x 10-1/2in x 3-1/2in (25.4cm x 26.7cm x 8.9cm) |
| SU2987-001 | 10-1/2in x 15in x 3-1/2in (26.7cm x 38.1cm x 8.9cm) |
| SU2987 | 10-1/2in x 20in x 3-1/2in (26.7cm x 50.8cm x 8.9cm) |
| SU2987-003 | 13in x 20-1/4in x 3-1/2in (33cm x 51.4cm x 8.9cm) |



Sterilization Tray

With lid, for wrapped instruments.

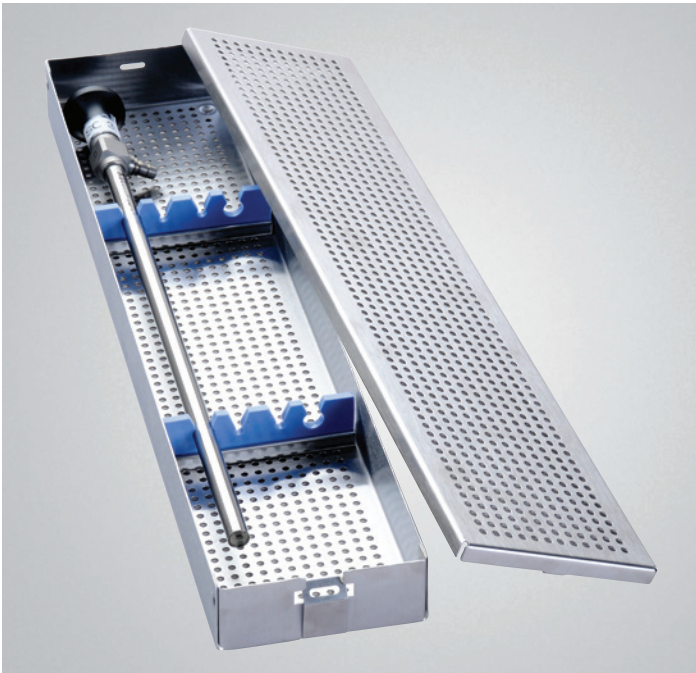
| Cat. No. | Dimensions |
|----------|---|
| SU2981 | 6-1/2in x 10in x 2-1/2in (16.5cm x 25.4cm x 6.3cm) |



Universal Camera Case

Designed for individual storage of camera and light cords. Can be modified with pin mat or silicone brackets.

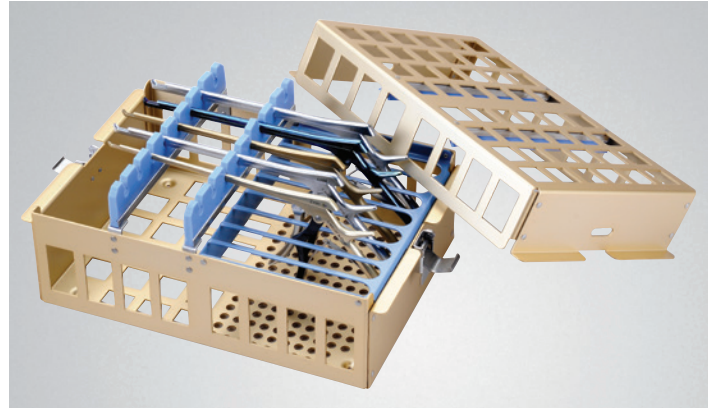
| Cat. No. | Dimensions |
|----------|---|
| SCS30109 | 9in x 10in x 3in (22.9cm x 25.4cm x 4.5cm) |



Operative Scope Case

For storage and sterilization of scopes. Adaptable for 1.7mm to 10mm scopes.

| Cat. No. | Dimensions |
|----------|---|
| SCS30418 | 4in x 17.5in x 1.5in (10.2cm x 44.5cm x 3.8cm) |



KERRISON Rongeur Trays

Nylon-coated handle compartment. Drop slot keyhole silicone insert to protect rongeur tips. Adjustments for silicone insert to accommodate shorter tip rongeurs. Holds eight instruments.

| Cat. No. | Dimensions |
|----------|--|
| SCS30812 | 9in x 13in x 6in (22.9cm x 33cm x 15.2cm) |

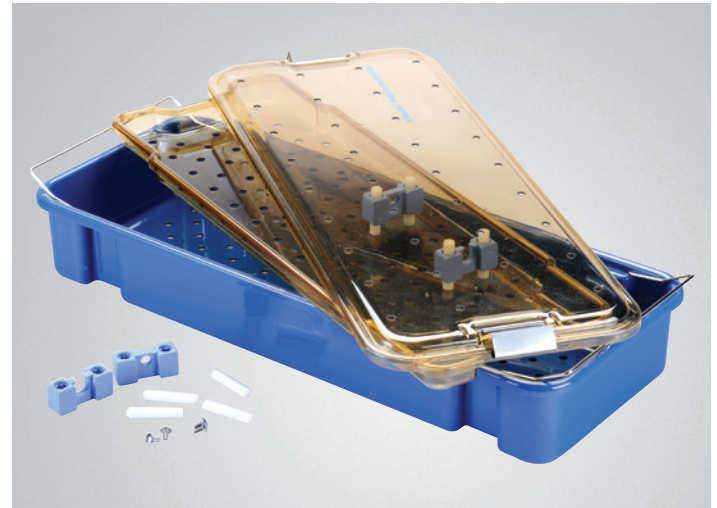
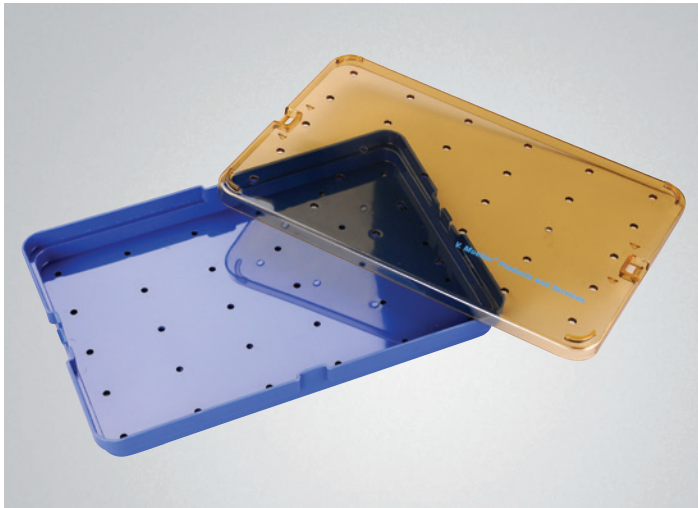


Microsurgery Trays

General use. Lid retainers securely hold instruments in place. Gold anodized surface and embossed feet. Removable instrument tray is 3in (7.6cm) deep.

| Cat. No. | Description |
|------------|---|
| SCS31010 | Without accessory area. Single level tray. 10-1/2in x 10-1/2in (26.6cm x 26.6cm) |
| SCS31015-0 | Medium tray. Single level tray. 10-1/2in x 15in (26.6cm x 38.1cm) |
| SCS31015-L | With long tray and accessory area 10-1/2in x 15in (26.6cm x 38.1cm) |
| SCS31015-S | With short tray and accessory area 10-1/2in x 15in (26.6cm x 38.1cm) |
| SCS31020-L | With long tray and accessory area 10-1/2in x 20in (26.6cm x 50.8cm) |
| SCS31020-S | With short tray and accessory area 10-1/2in x 20in (26.6cm x 50.8cm) |

Microsurgical Cases and Trays

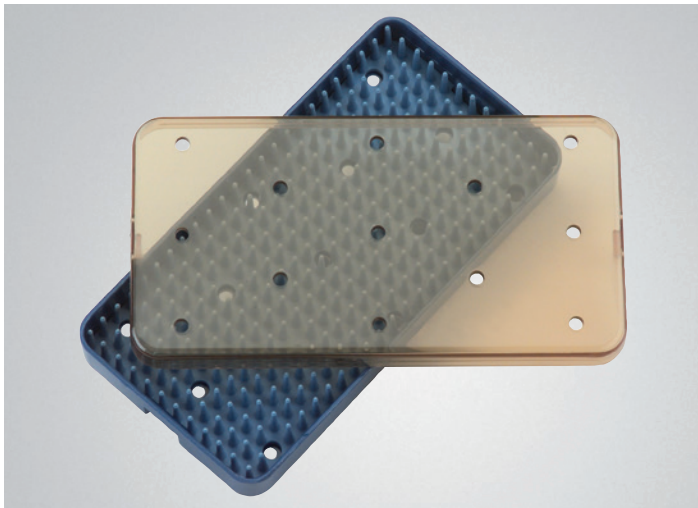


Plastic Micro Trays

| Cat. No. | Description | Dimensions |
|------------|--------------------|--|
| SU2990-080 | With mat | 15in x 10in x 3/4in (38.1cm x 25.4cm x 1.9cm) |
| SU2990-090 | Base and lid | 15in x 10in x 1-1/2in (38.1cm x 25.4cm x 3.8cm) |
| SU2990-091 | Double with mat | 15in x 10in x 1-1/2in (38.1cm x 25.4cm x 3.8cm) |
| SU2990-092 | Double with 2 mats | 15in x 10in x 1-1/2in (38.1cm x 25.4cm x 3.8cm) |

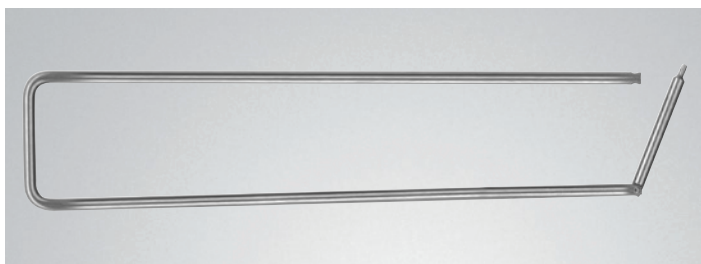
Plastic Endoscopic Trays

| Cat. No. | Description | Dimensions |
|------------|-----------------|---|
| SU2995-010 | With pin | 18in x 8-1/4in x 1-3/4in (45.7cm x 21cm x 4.4cm) |
| SU2995-020 | With pin | 22in x 8-1/4in x 1-3/4in (55.9cm x 21cm x 4.4cm) |
| SU2995-030 | With 2 pin sets | 22in x 8-1/4in x 3-1/2in (55.9cm x 21cm x 8.9cm) |



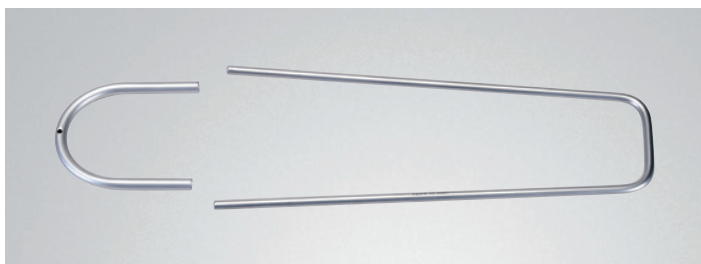
Plastic Microsurgical Sterilization Trays

| Cat. No. | Description | Dimensions |
|------------|-----------------------|--|
| SU2990-010 | With mat | 6in x 2in x 5/8in (15.2cm x 5cm x 1cm) |
| SU2990-030 | With mat | 6in x 3in x 5/8in (15.2cm x 7.6cm x 1cm) |
| SU2990-050 | With mat | 9-5/8in x 6in x 5/8in (24.5cm x 15.2cm x 1cm) |
| SU2990-054 | Base and lid | 10in x 6in x 1-1/2in (25.4cm x 15.2cm x 3.8cm) |
| SU2990-060 | Double-deck with mats | 9-5/8in x 6in x 1-1/2in (24.5cm x 15.2cm x 3.8cm) |



Single Link Instrument Holders

| Cat. No. | Size |
|-----------|------------------------------------|
| SU51-0006 | 6in x 2-1/2in (15.2cm x 6.3cm) |
| SU51-0008 | 8in x 2-1/2in (20.3cm x 6.3cm) |
| SU51-0010 | 10in x 2-1/2in (25.4cm x 6.3cm) |
| SU51-0012 | 12in x 2-1/2in (30.5cm x 6.3cm) |
| SU51-0014 | 14in x 2-1/2in (35.6cm x 6.3cm) |
| SU51-0016 | 16in x 2-1/2in (40.6cm x 6.3cm) |



WEINSTEIN Instrument Sterilizing Racks

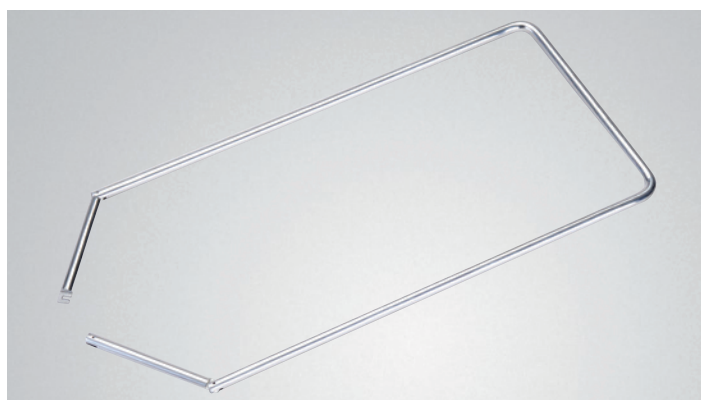
| Cat. No. | Description | Size |
|----------|------------------------|--------------------------------|
| SU2977 | Holds up to 36 forceps | 12in x 3in (30.5cm x 7.6cm) |



Instrument Stringers

Pair.

| Cat. No. | Size |
|------------|------------------------------------|
| SU2986-008 | 8in x 2-1/2in (20.3cm x 6.3cm) |
| SU2986-010 | 10in x 2-1/2in (25.4cm x 6.3cm) |
| SU2986-012 | 12in x 2-1/2in (30.5cm x 6.3cm) |
| SU2986-014 | 14in x 2-1/2in (35.6cm x 6.3cm) |
| SU2986-016 | 16in x 2-1/2in (40.6cm x 6.3cm) |
| SU2986-018 | 18in x 2-1/2in (45.7cm x 6.3cm) |



POSILOK™ Instrument Holders

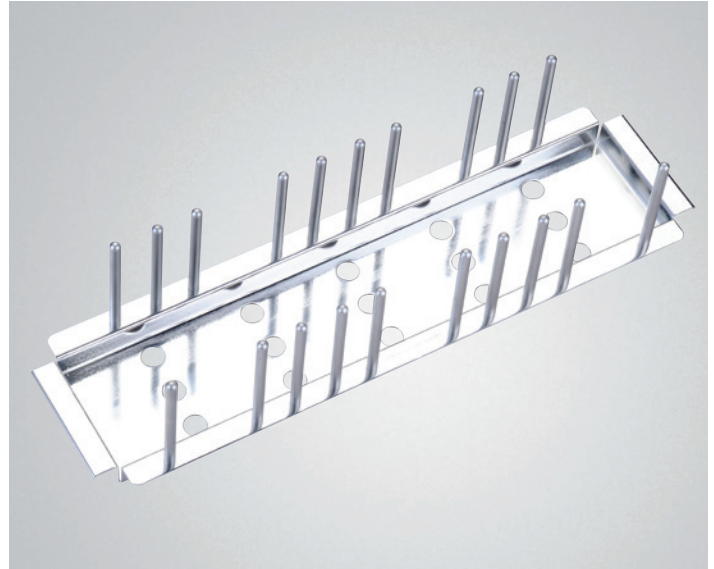
| Cat. No. | Size |
|------------|------------------------------------|
| SU2979 | 6in x 2-1/2in (15.2cm x 6.3cm) |
| SU2979-001 | 8in x 2-1/2in (20.3cm x 6.3cm) |
| SU2979-004 | 8in x 5in (20.3cm x 12.7cm) |
| SU2979-006 | 10in x 2-1/2in (25.4cm x 6.3cm) |
| SU2979-010 | 10in x 5in (25.4cm x 12.7cm) |
| SU2979-002 | 12in x 2-1/2in (30.5cm x 6.3cm) |
| SU2979-005 | 12in x 5in (30.5cm x 12.7cm) |
| SU2979-007 | 14in x 2-1/2in (35.6cm x 6.3cm) |
| SU2979-014 | 14in x 5in (35.6cm x 12.7cm) |
| SU2979-003 | 16in x 2-1/2in (40.6cm x 6.3cm) |
| SU2979-016 | 16in x 5in (40.6cm x 12.7cm) |

Holders and Racks



WEISENBACH Sterile Forceps Holders

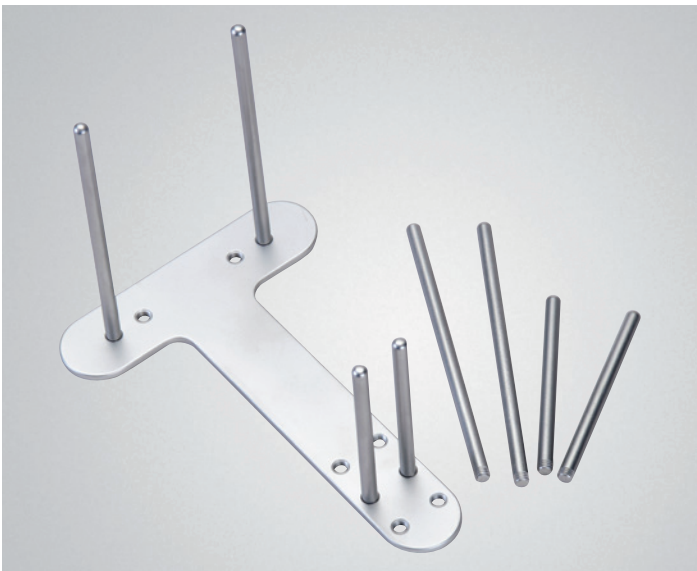
| Cat. No. | Length |
|----------|------------------|
| SU2974 | 6in (15.2cm) |
| SU2975 | 12in (30.5cm) |



KIDD Instrument Rack

Holds forceps sorted by type and size. Holds forceps jaws open. Prevents instruments from touching shelf or table surface. Electropolishing and matte finish.

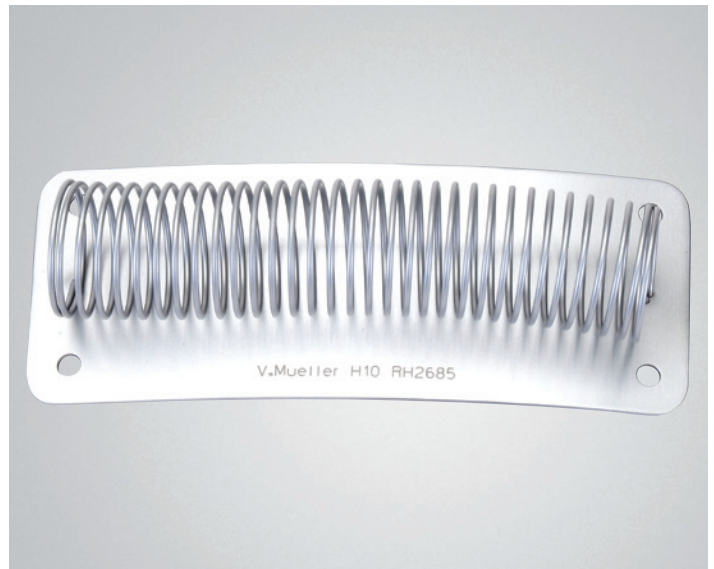
| Cat. No. | Size |
|----------|--------------------------------------|
| SU2985 | 15-3/8in x 3-3/4in (39cm x 9.5cm) |



HAGIE T-Stack Instrument Rack

Holds up to 12 similar ring-handled forceps.

| Cat. No. |
|----------|
| SU2980 |



TURCHIK Instrument Holder


Simple and convenient spring holder for straight instruments.

| Cat. No. |
|----------|
| RH2685 |



For more information about Genesis containers, contact your V. Mueller sales representative, send an E-Mail to GMB-VM-EUROPE@carefusion.com or visit carefusion.com/vmueller.

 CareFusion
1500 Waukegan Road
McGaw Park, IL 60085 USA

 CareFusion France 309 S.A.S.
8 bis rue de la Renaissance
F-44110 CHATEAUBRIANT

carefusion.com

© 2013 CareFusion Corporation or one of its subsidiaries. All rights reserved. Genesis, V. Mueller, CareFusion and the CareFusion logo are trademarks or registered trademarks of CareFusion Corporation or one of its subsidiaries. All other trademarks are property of their respective owners. Please read the complete Instructions For Use that come with the devices or follow the instructions on the product labelling. Medical devices class I according to Medical Devices Directive 93/42/EC.
LIT13015en-ED01-JUN13